

# ALL BLUES

ALTERNATE ALTO SAX

By MILES DAVIS

Arranged by MIKE TOMARO

**(RUBATO - DIRECTED)**

**(SLOW TRILL)** *tr*

**(5) (JAZZ WALTZ)** (♩ =  $\frac{3}{4}$ )

**(13)** **(21)**

**(29)** **(37)**

**(45)**

Copyright © 1959 JAZZ HORN MUSIC CORP.

Copyright Renewed

This arrangement Copyright © 2010 JAZZ HORN MUSIC CORP.

All Rights Controlled and Administered by SONGS OF UNIVERSAL, INC.


All Rights Reserved Used by Permission

# ALTERNATE ALTO SAX

(53) 



(61)



(69)



TO CODA 

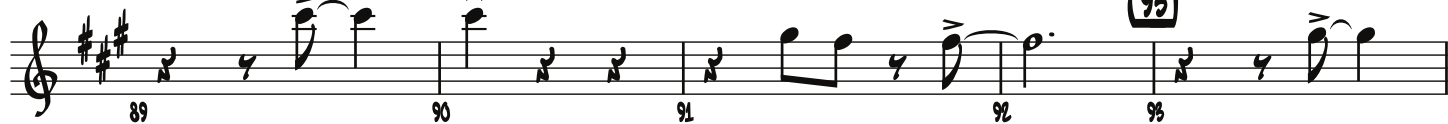


(77) (OPEN FOR SOLOS - BACKGROUNDS ON CUE)

(85)



(93)



(98-100)



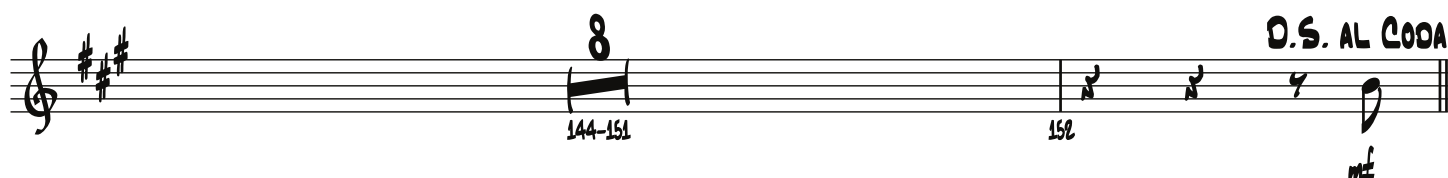
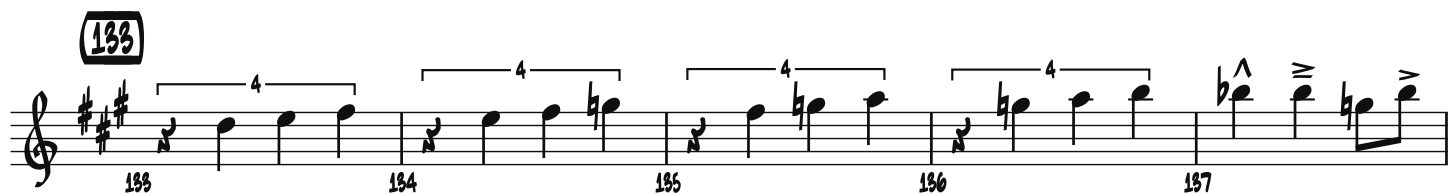
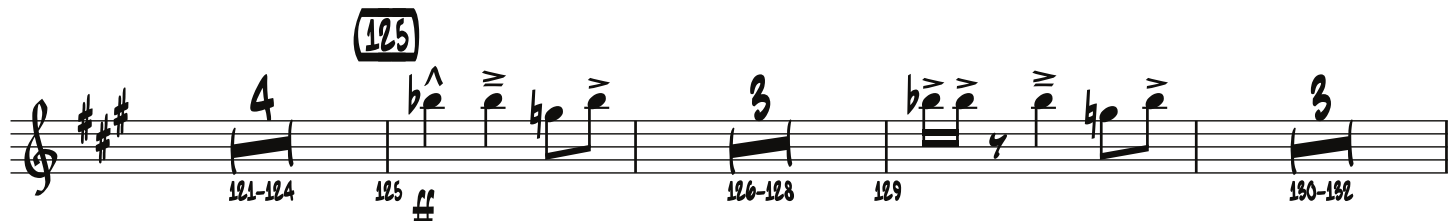
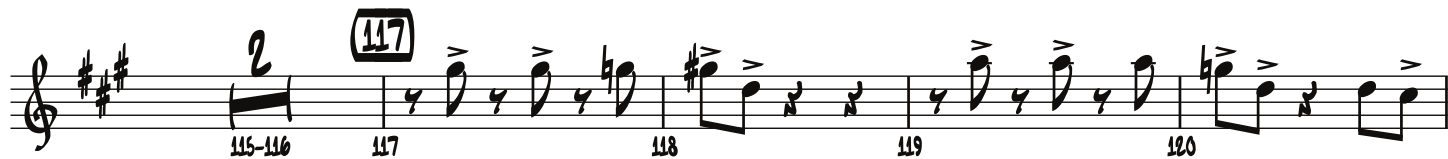
(101)



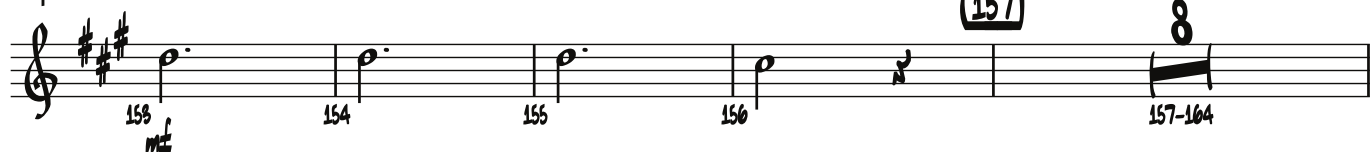
(109)



# ALTERNATE ALTO SAX



**CODA**



**(165)**



**(173)**



# ALL BLUES

ALTERNATE TENOR SAX

By MILES DAVIS

Arranged by MIKE TOMARO

(RUBATO - DIRECTED)

(SLOW TRILL)

(5) (JAZZ WALTZ) (♩ =  $\frac{3}{4}$ )

8 13 7 21

5-12 13-19 20 21 22

23 24 25 26 27

28 29 30 31 32

33 34 35 36 37

38 39 40 41 42

43 44 45 45-51

Copyright © 1959 JAZZ HORN MUSIC CORP.

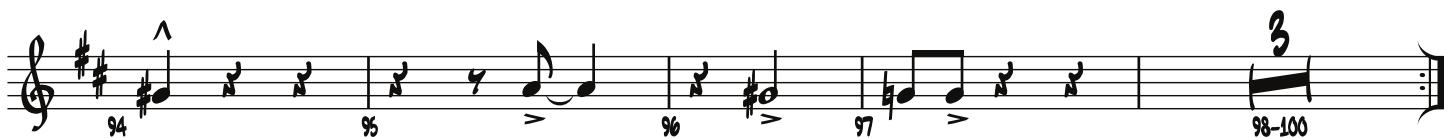
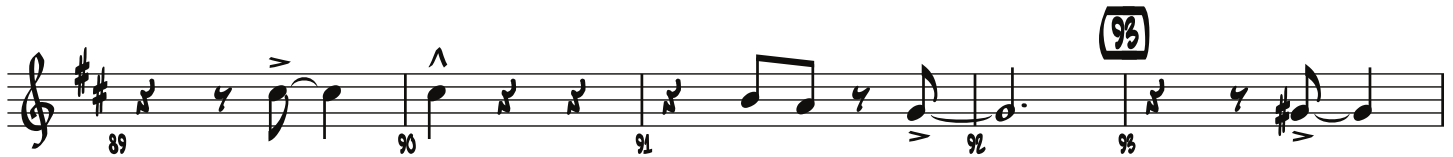
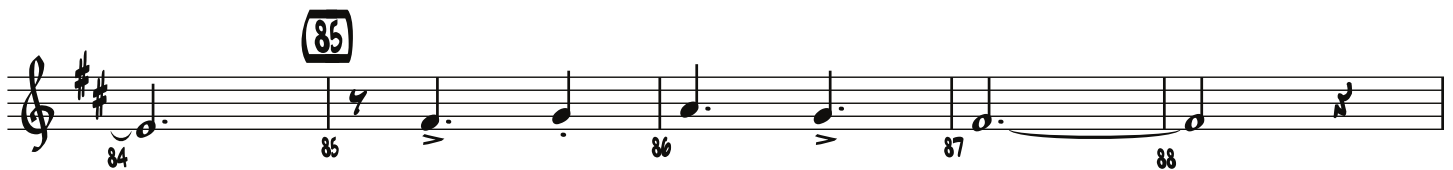
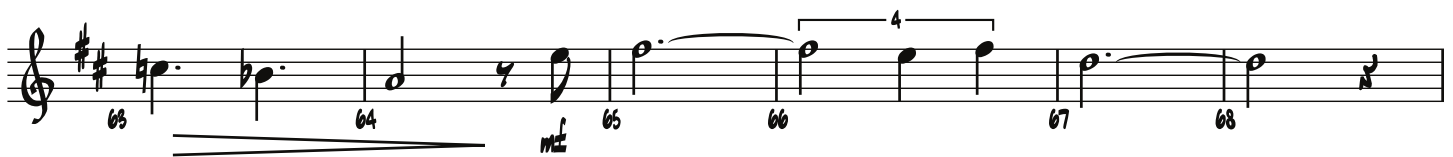
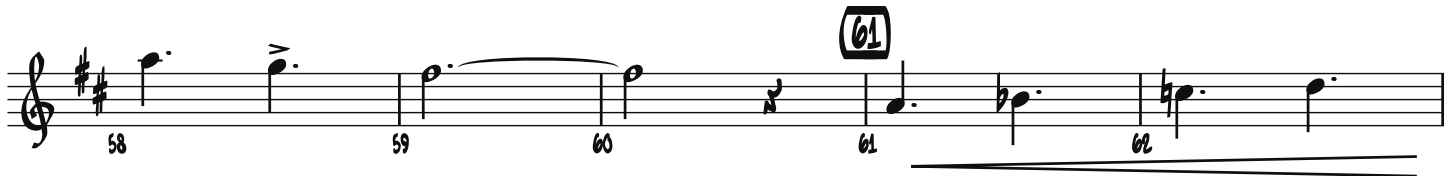
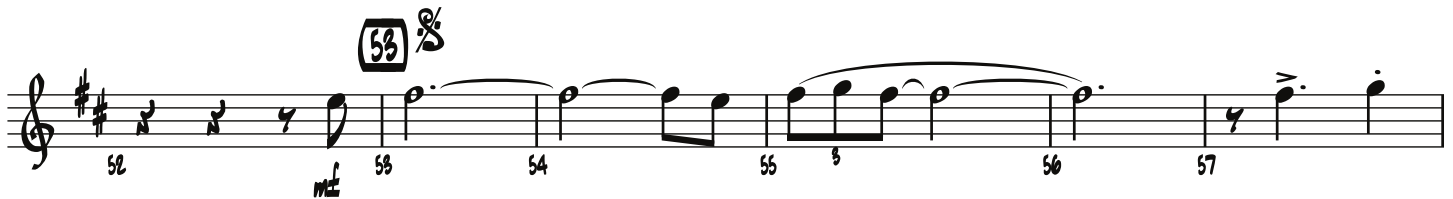
Copyright Renewed

This arrangement Copyright © 2010 JAZZ HORN MUSIC CORP.

All Rights Controlled and Administered by SONGS OF UNIVERSAL, INC.

All Rights Reserved Used by Permission

# ALTERNATE TENOR SAX



# ALTERNATE TENOR SAX

(101)



(109)



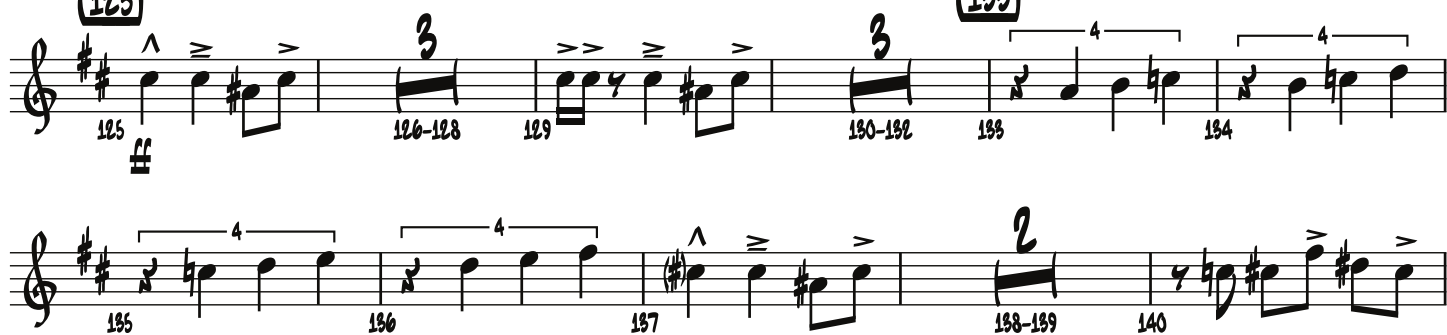
(117)



(125)



(133)



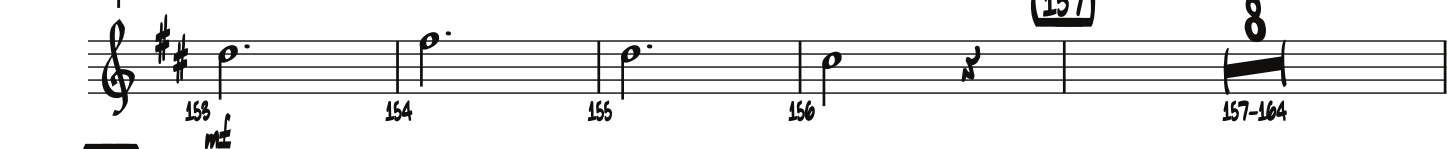
(141)



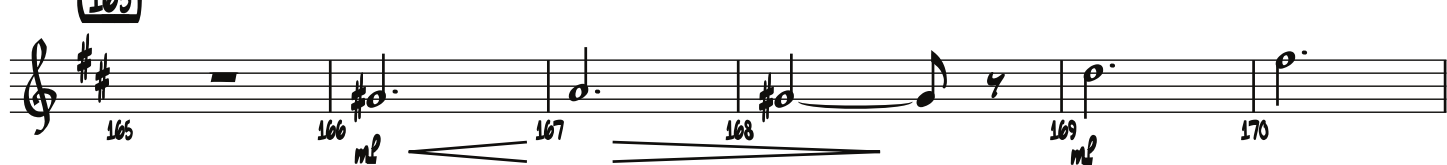
O.S. AL CODA

♩ CODA

(157)



(165)



(173)



# ALL BLUES

## ALTERNATE TROMBONE

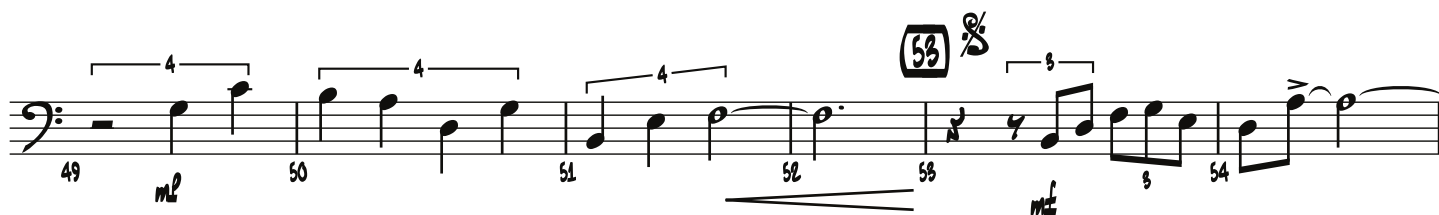
By MILES DAVIS

Arranged by MIKE TOMARO

### (RUBATO - DIRECTED)



### (5) (JAZZ WALTZ) (♩ = 3♩)



Copyright © 1959 JAZZ HORN MUSIC CORP.

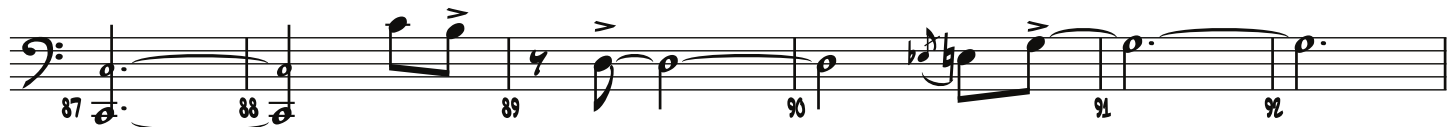
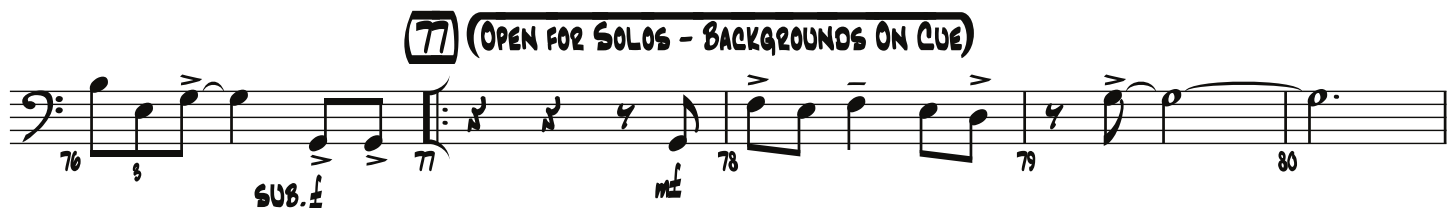
Copyright Renewed

This arrangement Copyright © 2010 JAZZ HORN MUSIC CORP.

All Rights Controlled and Administered by SONGS OF UNIVERSAL, INC.

All Rights Reserved Used by Permission

# ALTERNATE TROMBONE





# ALTERNATE TROMBONE

(125)

125 126 127 128 129

(133)

130 131 132 133 134

135 136 137 138 139

(141)

D.S. AL CODA

140 141 142 143 144-152

♩ CODA

153-156

(157)

157 158 159 160 161 162 163

(165)

164 165 166 167 168 169-172

(173)

173-174 175 176 177 178 179

# ALL BLUES

ALTO SAX

By MILES DAVIS

Arranged by MIKE TOMARO

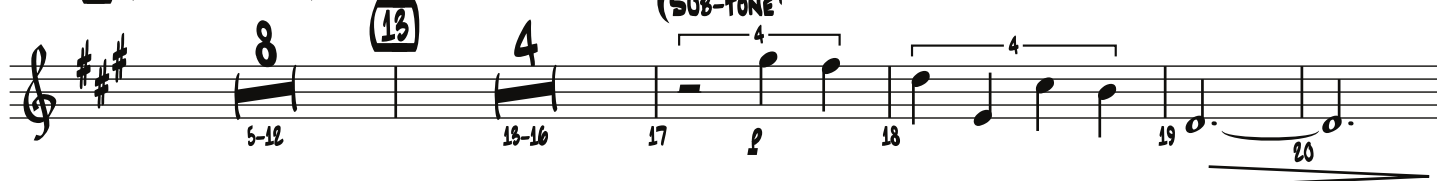
(RUBATO - DIRECTED)

(SLOW TRILL)



(5) (JAZZ WALTZ) (♩ = 3♩)

(SUB-TONE)



(21)

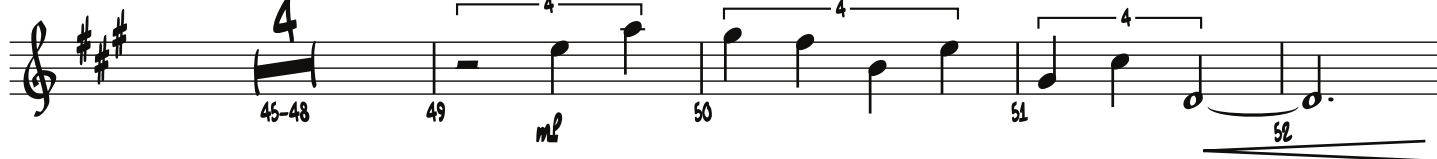
(29)



(37)



(45)



(53) %



(61)



Copyright © 1959 JAZZ HORN MUSIC CORP.

Copyright Renewed

This arrangement Copyright © 2010 JAZZ HORN MUSIC CORP.

All Rights Controlled and Administered by SONGS OF UNIVERSAL, INC.

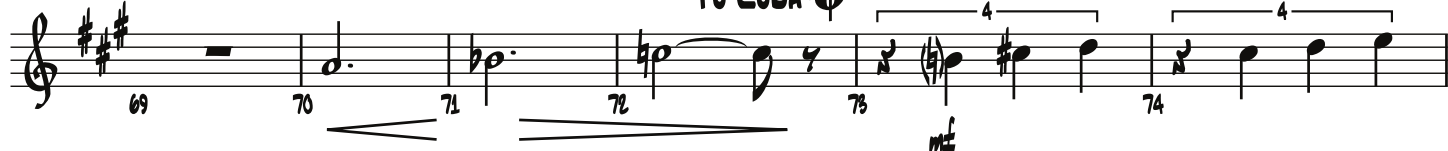
All Rights Reserved Used by Permission

# ALTO SAX

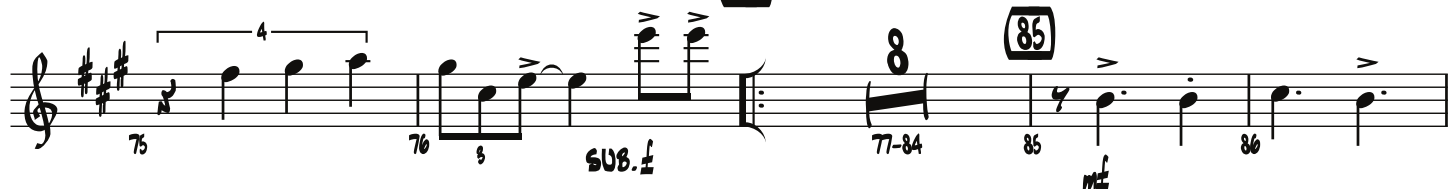


(69)

TO CODA



(77) (OPEN FOR SOLOS - BACKGROUNDS ON CUE)



(93)



(101)



(109)



(117)



ALTO SAX

(125)



(133)



(141)

O.S. AL CODA

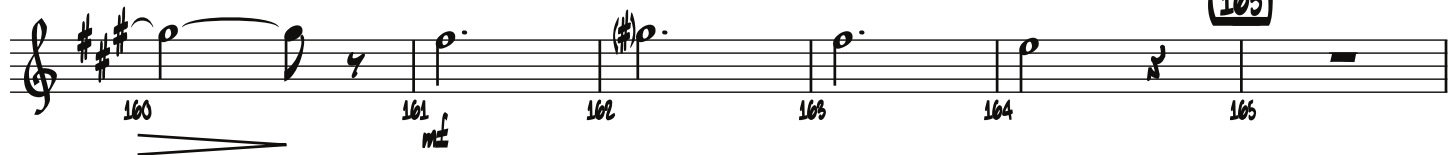


♩ CODA

(157)



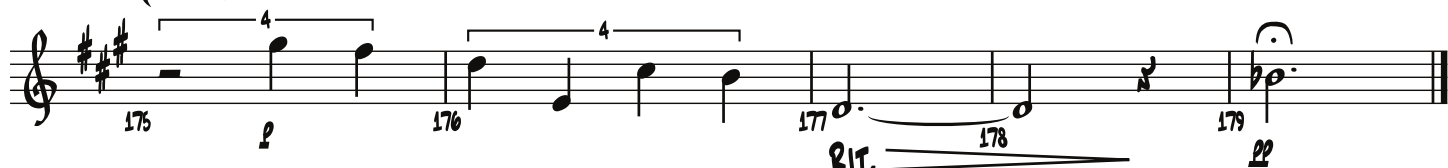
(165)



(173)



(SUB-TONE)



# ALL BLUES

BARITONE SAX

By MILES DAVIS

Arranged by MIKE TOMARO

**(RUBATO - DIRECTED)** **(SLOW TRILL)**

**(5) (JAZZ WALTZ)** (♩ =  $\frac{3}{4}$ ) **(SUB-TONE)**

1 2 3 4 5 6 7 8 9 10 11 12 13 14 15 16 17 18 19 20 21 22 23 24 25 26 27 28 29 30 31 32 33 34 35 36 37 38 39 40 41 42 43 44 45 46 47 48 49 50 51 52 53 54 55 56 57 58 59 60 61 62 63 64 65

Copyright © 1959 JAZZ HORN MUSIC CORP.

Copyright Renewed

This arrangement Copyright © 2010 JAZZ HORN MUSIC CORP.

All Rights Controlled and Administered by SONGS OF UNIVERSAL, INC.

All Rights Reserved Used by Permission

# BARITONE SAX

66 67 68 69 70

(69)

To CODA

71 72 73 74 75

mf

(77) (OPEN FOR SOLOS - BACKGROUNDS ON CUE)

76 77 78 79 80

SUB. f mf

(85)

81 82 83 84 85 86

87 88 89 90 91 92

(93)

93 94 95 96 97 98-100

3

(101)

101 102 103 104 105

5

(109)

106 107 108 109 110

5 (4)

111 112 113 114 115 116

(4)

(117)

117 118 119 120 121-124

4

# BARITONE SAX

**(125)**

125 126 127 128 129

**(133)**

130 131 132 133 134

135 136 137 138 139

**(141)**

**D.S. AL CODA**

**9**

140 141 142 143 144-152

**CODA**

153-156

**(157)**

157 158 159 160 161 162 163

**(165)**

164 165 166 167 168 169-172

**(173)**

**(SUB-TONE)**

173-174 175 176 177 178 179

# ALL BLUES

BASS

By MILES DAVIS

Arranged by MIKE TOMARO

**(RUBATO - DIRECTED)**

**(5) (JAZZ WALTZ)** (♩ =  $\overset{\text{3}}{\text{♩}}$ )

1 2 3 4 5 6 7 8 9 10 11 12 13 14 15 16 17 18 19 20 21 22 23 24 25 26 27 28 29 30 31 32 33 34 35 36 37 38 39 40 41 42 43 44 45 46 47 48 49 50 51 52

Copyright © 1959 JAZZ HORN MUSIC CORP.

Copyright Renewed

This arrangement Copyright © 2010 JAZZ HORN MUSIC CORP.

All Rights Controlled and Administered by SONGS OF UNIVERSAL, INC.

All Rights Reserved Used by Permission



## BASS

**(53)**  $\frac{3}{4}$

**(61)**

**(69)**

**TO CODA**  $\text{Coda symbol}$

**(77)** (OPEN FOR SOLOS - BACKGROUNDS ON CUE)

**(85)**

**(93)**

**(101)**

**(109)**

**(AS WRITTEN)**

53  $m\sharp$  54 55 56 57 58

59 60 61 62 63 64

65  $m\sharp$  66 67 68 69 70

71 72 73  $m\sharp$  74 75 76  $\text{SUB. } \sharp$

77  $m\sharp$  78 79 80 81 82

83 84 85  $\text{C}^9$  86 87  $\text{C}^13\text{SUS}$   $\text{C}^9$  88

89 90 91 92 93  $\text{D}7(\sharp 9)$  94

95  $\text{E}^b7(\sharp 9)$  96  $\text{D}+7(\sharp 9)$  97  $\text{G}7(\text{ADD}13)$  98 99  $\text{G}^9\text{SUS}$   $\text{G}7(\text{ADD}13)$  100

101  $\text{G}^13(\sharp 9)$  102  $\text{D}+7(\sharp 9)$   $\text{D}^b13$   $\text{C}^13(\sharp 9)$  103 104  $\text{A}^b13$   $\text{G}^13(\sharp 9)$  105 106

107 108 109  $\text{C}^13$  110 111  $\text{D}^b13$   $\text{C}^13$  112  $\text{A}^b13$

BASS

**G13(#9)**  
 113 114 115 116 117 118

**E<sup>b</sup>13(#9)**  
 119 120 (AS WRITTEN) 121-124 125 **G13(#9)** 126

127 128 129 130 131 132

**(133)** (AS WRITTEN) 133 134 135 136 137 138 **G13(#9)**

**(141)** **G13(#9)** 139 140 141 142 143 144 **(AS WRITTEN)**

145 146 147 148 149 150 151 152 **D.S. AL CODA**

**♩ CODA** 153 154 155 156 157 158

159 160 161 162 163 164 165 166 167 168 169 170 171 172

**(173)** 173 174 175 176 177 178 179 **Rit.**

# ALL BLUES

## SOLO SHEET

BASS CLEF INSTRUMENTS

By MILES DAVIS

Arranged by MIKE TOMARO

77 G7(Add13) G9sus G7(Add13)

(G7(Add13)) G9sus G7(Add13)

85 C9 C13sus C9

G7(Add13) G9sus G7(Add13)

93 D7(#9) Eb7(#9) D7(#9)

G7(Add13) G9sus G7(Add13)

CLEAR NOTEHEADS = CHORD TONES

Copyright © 1959 JAZZ HORN MUSIC CORP.

Copyright Renewed

This arrangement Copyright © 2010 JAZZ HORN MUSIC CORP.

All Rights Controlled and Administered by SONGS OF UNIVERSAL, INC.

All Rights Reserved Used by Permission

# ALL BLUES

SOLO SHEET  
8b INSTRUMENTS

By MILES DAVIS  
Arranged by MIKE TOMARO

77 A7(Add13) A9sus A7(Add13)

(A7(Add13)) A9sus A7(Add13)

85 D9 D13sus D9

A7(Add13) A9sus A7(Add13)

93 E7(#9) F7(#9) E7(#9)

A7(Add13) A9sus A7(Add13)

CLEAR NOTEHEADS = CHORD TONES

Copyright © 1959 JAZZ HORN MUSIC CORP.

Copyright Renewed

This arrangement Copyright © 2010 JAZZ HORN MUSIC CORP.

All Rights Controlled and Administered by SONGS OF UNIVERSAL, INC.

All Rights Reserved Used by Permission

# ALL BLUES

## SOLO SHEET

C TREBLE CLEF INSTRUMENTS

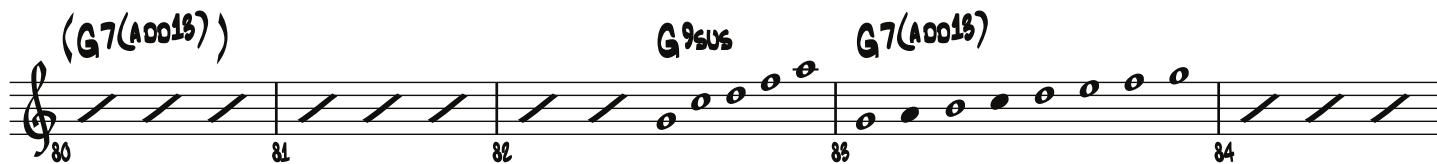
By MILES DAVIS

Arranged by MIKE TOMARO

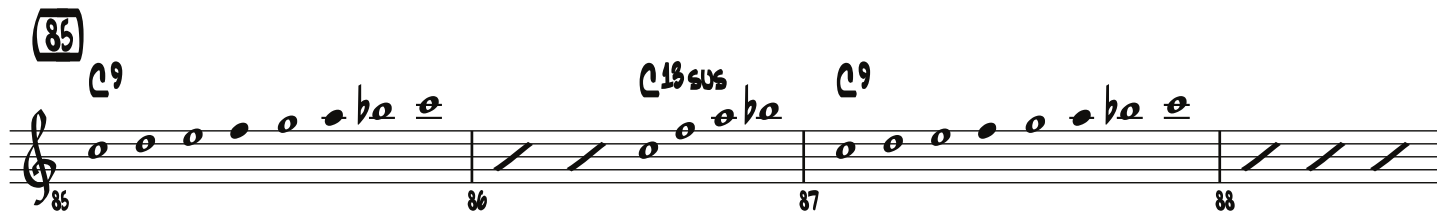
77 **G7(A0013)** **G9sus** **G7(A0013)**



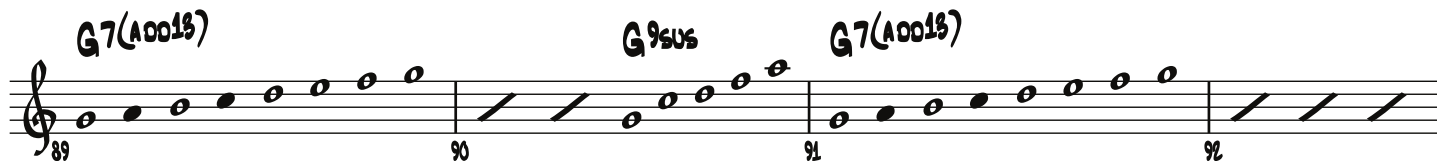
**(G7(A0013))** **G9sus** **G7(A0013)**



85 **C9** **C13sus** **C9**



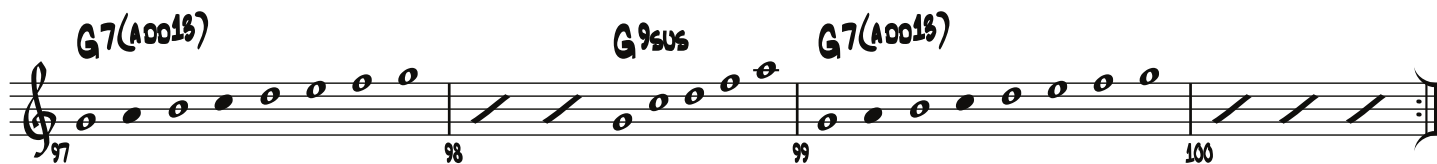
**G7(A0013)** **G9sus** **G7(A0013)**



93 **D7(#9)** **Eb7(#9)** **D7(#9)**



**G7(A0013)** **G9sus** **G7(A0013)**



CLEAR NOTEHEADS = CHORD TONES

Copyright © 1959 JAZZ HORN MUSIC CORP.

Copyright Renewed

This arrangement Copyright © 2010 JAZZ HORN MUSIC CORP.

All Rights Controlled and Administered by SONGS OF UNIVERSAL, INC.

All Rights Reserved Used by Permission

# ALL BLUES

## DRUMS

By MILES DAVIS

Arranged by MIKE TOMARO

(RUBATO - DIRECTED)

(RIDE)

(TO BRUSHES)

(5) (JAZZ WALTZ)

(JAZZ WALTZ) (JAZZ WALTZ)

(13)

(SIM.)

(H.H. w/FOOT)

(21)

(29)

(37) (CR.)

(FILL) -----

(TIME)

(CR.) (FILL) ----- (TIME)

(45)

(53) (STICKS)

Copyright © 1959 JAZZ HORN MUSIC CORP.

Copyright Renewed

This arrangement Copyright © 2010 JAZZ HORN MUSIC CORP.

All Rights Controlled and Administered by SONGS OF UNIVERSAL, INC.

All Rights Reserved Used by Permission

# DRUMS

61 8

57 58 59 60 61 62 63

64 65 *mf* 66 67 68 69 70

71 72 73 *mf* 74 75 76 SUB. *f*

77 (OPEN FOR SOLOS - BACKGROUNDS ON CUE)

78 79 80 81 82

83 84 85 86 87 88

89 90 91 92 93 94

95 96 97 98 99 100

101 (ENS.) 102 103 104 105 106

107 108 109 110 111 112

113 114 115 116 117 118

61 69 (C2.) (FILL) (TIME) (ENS.)

TO CODA

8 4 8 4 8 4 8 4

# DRUMS

Handwritten musical score for drums, featuring measures 119 through 179. The score includes various musical notations, dynamics, and performance instructions.

**Measures 119-124:** Measures 119-120 contain eighth notes. Measure 121 has a **(Solo)** instruction. Measures 122-124 are marked with a dashed line.

**Measures 125-130:** Measure 125 starts with a **(125) (Ens.)** instruction. Measures 125-126 are marked **ff**. Measures 127-130 contain eighth notes.

**Measures 131-136:** Measures 131-132 are marked with a dashed line. Measures 133-136 contain eighth notes with a **(133)** instruction.

**Measures 137-142:** Measures 137-138 are marked with a dashed line. Measures 139-142 contain eighth notes. Measure 141 has a **(141)** instruction. Measure 142 ends with a **(Fill)** instruction.

**Measures 143-149:** Measures 143-144 contain eighth notes. Measure 145 is marked **(TIME)**. Measures 146-149 are marked with a dashed line. Measure 148 has a **8** instruction.

**Measures 150-155:** Measures 150-152 are marked with a dashed line. Measure 153 is marked **O.S. AL CODA** and **12**. Measure 154 is marked **ff**. Measure 155 is marked **ff**. Measure 154 has a **⊕ CODA** instruction.

**Measures 156-161:** Measures 156-157 are marked with a dashed line. Measure 158 is marked **4**. Measure 159 is marked **(157)**. Measures 160-161 are marked with a dashed line. Measure 160 has a **(CR.)** instruction. Measure 161 has a **(FILL)** instruction.

**Measures 162-167:** Measures 162-163 are marked with a dashed line. Measure 164 is marked **8**. Measure 165 is marked **(165)**. Measures 166-167 are marked with a dashed line. Measure 166 has a **(CR.)** instruction. Measure 167 has a **(FILL)** instruction.

**Measures 168-173:** Measures 168-169 are marked with a dashed line. Measure 170 is marked **(168)**. Measures 171-173 are marked with a dashed line. Measure 171 has a **(CR.)** instruction. Measure 172 has a **(FILL)** instruction. Measure 173 has a **(173)** instruction.

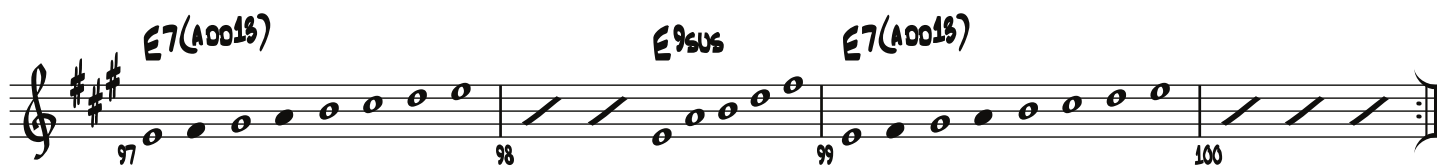
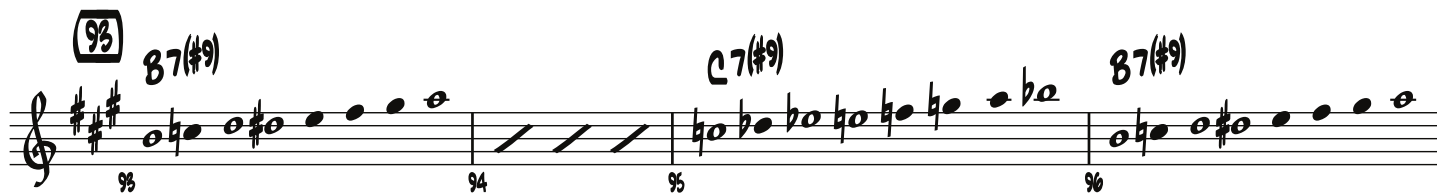
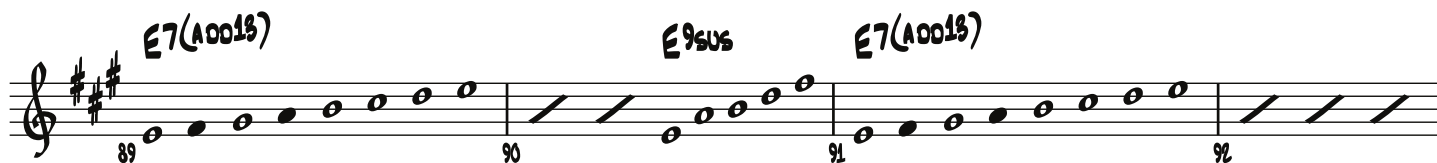
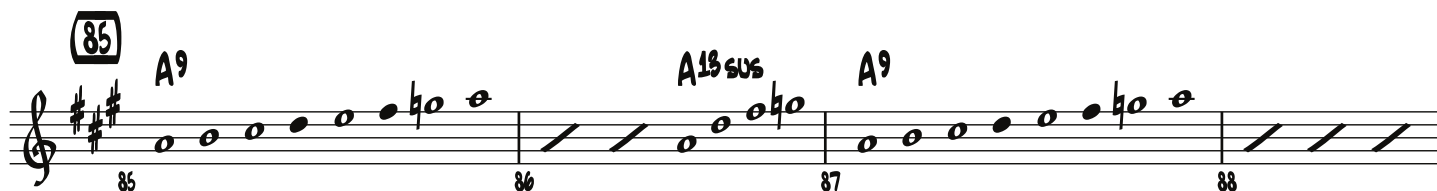
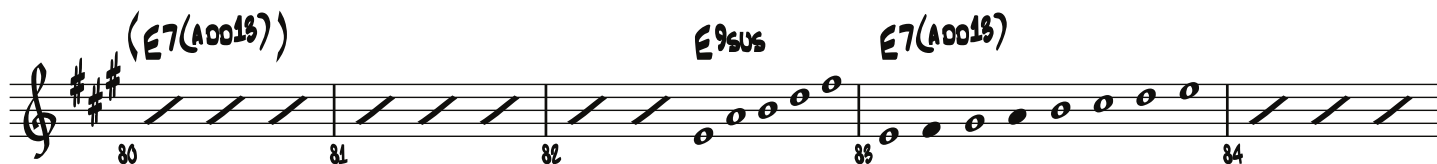
**Measures 174-179:** Measures 174-175 are marked with a dashed line. Measure 176 is marked **4**. Measure 177 is marked **Rit.**. Measure 178 is marked **ff**. Measure 179 is marked **ff**.



# ALL BLUES

SOLO SHEET  
E♭ INSTRUMENTS

By MILES DAVIS  
Arranged by MIKE TOMARO



CLEAR NOTEHEADS = CHORD TONES

Copyright © 1959 JAZZ HORN MUSIC CORP.  
Copyright Renewed

This arrangement Copyright © 2010 JAZZ HORN MUSIC CORP.  
All Rights Controlled and Administered by SONGS OF UNIVERSAL, INC.  
All Rights Reserved Used by Permission

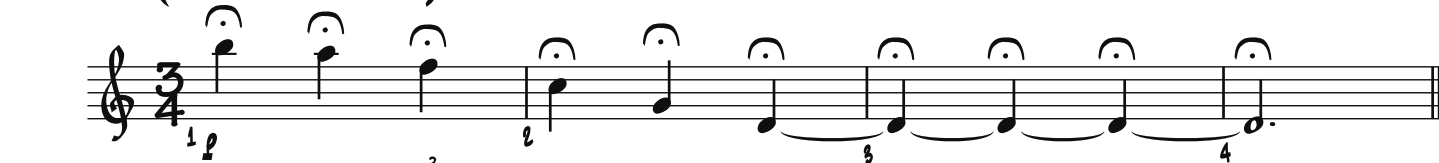
# ALL BLUES

GUITAR

By MILES DAVIS

Arranged by MIKE TOMARO

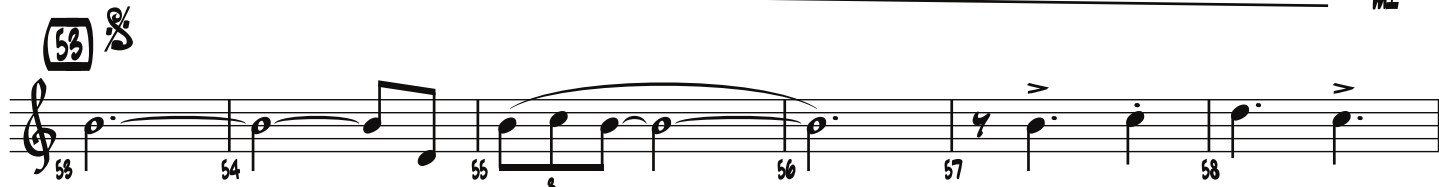
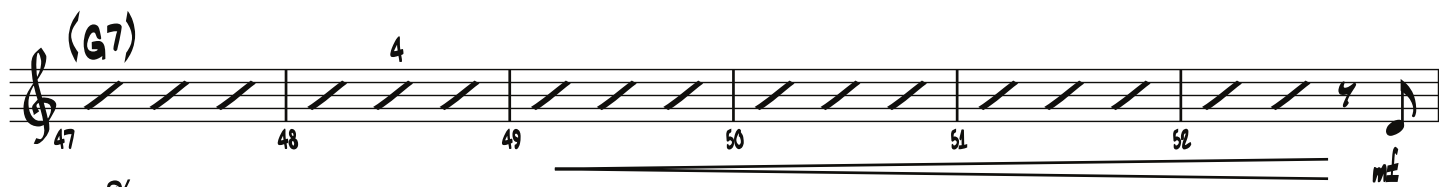
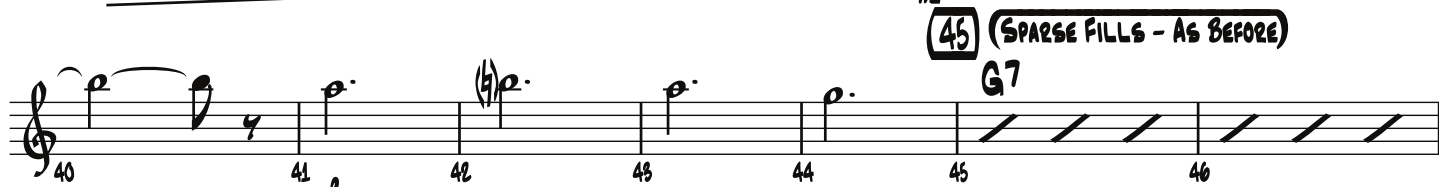
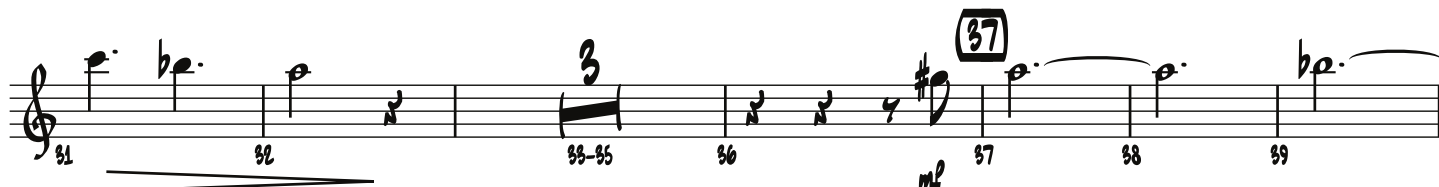
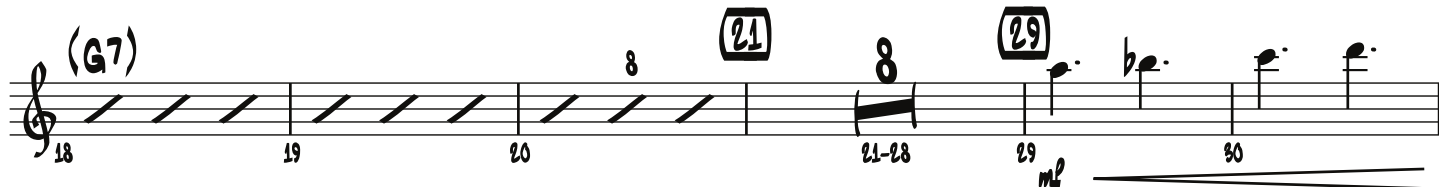
(RUBATO - DIRECTED)



(5) (JAZZ WALTZ) (♩ = 3♩)



(13) G7 (VERY SPARSE, TASTY FILLS - DO NOT COMP)



Copyright © 1959 JAZZ HORN MUSIC CORP.

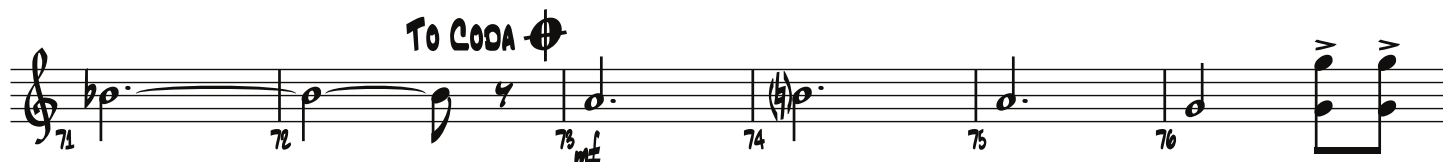
Copyright Renewed

This arrangement Copyright © 2010 JAZZ HORN MUSIC CORP.

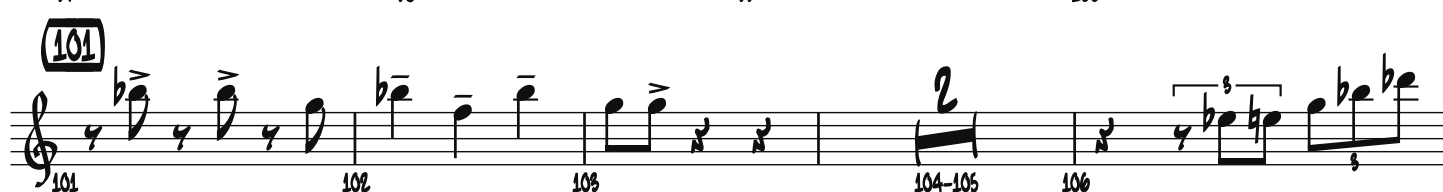
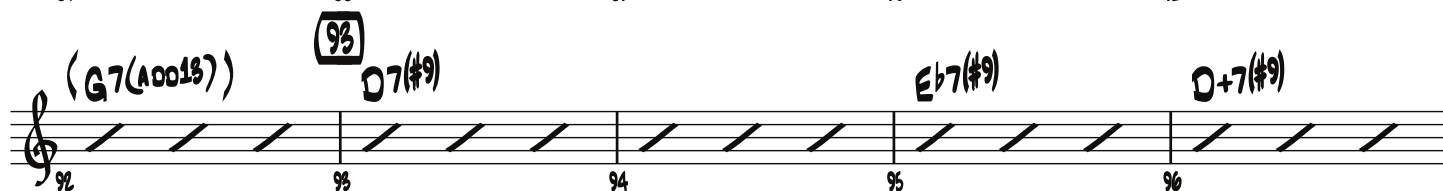
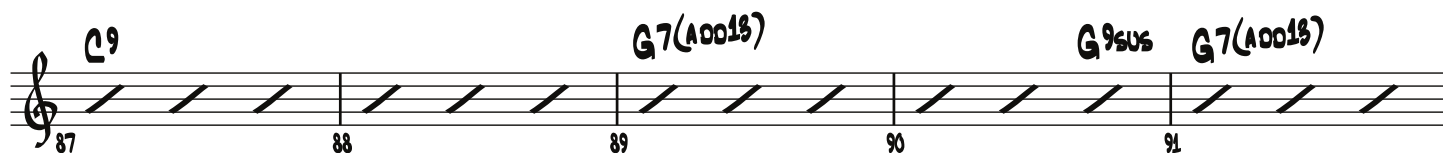
All Rights Controlled and Administered by SONGS OF UNIVERSAL, INC.

All Rights Reserved Used by Permission

# GUITAR



(77) (OPEN FOR SOLOS - BACKGROUNDS ON CUE)



# GUITAR

(G13(#9)) (117)

116 117 118 119 120 121-124

4

(125)

G13(#9)

125 126 127 128 129

G13(#9)

(133)

130 131 132 133 134 135

4 4 4

(141)

136 137 138-139 140 141 142

4 2

G7 (SPARSE FILLS - AS BEFORE)

143 144 145 *mf* 146 147

(G7)

D.S. AL CODA

148 149 150 151 152

**CODA**

(157)

153 *mf* 154 155 156 157-163

7

(165)

164 165 166 167 168

(173)

G7 (SPARSE FILLS - AS BEFORE)

169 *mf* 170 171 172 173 174

(G7)

G13(#9)

175 176 177 178 179

Rit.

*pp*

**PIANO**

# **ALL BLUES**

**By MILES DAVIS**

*Arranged by MIKE TOMARO*

# ALL BLUES

PIANO

By MILES DAVIS

Arranged by MIKE TOMARO

(RUBATO - DIRECTED)

(5) (JAZZ WALTZ) (♩ =  $\overset{3}{\text{J}}$ )

(13)

(21)

(29)

Gm9 Abm9 Bbm9 Cm9

Copyright © 1959 JAZZ HORN MUSIC CORP.

Copyright Renewed

This arrangement Copyright © 2010 JAZZ HORN MUSIC CORP.

All Rights Controlled and Administered by SONGS OF UNIVERSAL, INC.

All Rights Reserved Used by Permission

PIANO

B<sup>b</sup>ma9 A<sup>b</sup>ma9 Gmi9

31 32 33 34 35 36

(37) D13(#9) Eb13(#9) D+7(#9/b9)

37 38 39 40 41 42

(45)

43 44 45 46 47 48

(53) %

49 50 51 52 53 54

55 56 57 58 59 60

**(61)** **PIANO**  
 Gmi9 A<sup>b</sup>ma9 B<sup>b</sup>ma9 Cma9 B<sup>b</sup>ma9 A<sup>b</sup>ma9 Gmi9

61 62 63 64 65 66 67

**(69)** D13(#9) E<sup>b</sup>13(#9) D+7(#9) TO CODA

68 69 70 71 72 73

**(77)** (OPEN FOR SOLOS - BACKGROUNDS ON CUE)  
 G7(A0013) G9sus G7(A0013)

74 75 76 77 78 79

G9sus G7(A0013) **(85)** C9 C13sus

80 81 82 83 84 85 86

C9 G7(A0013) G9sus G7(A0013)

87 88 89 90 91 92



PIANO

93  $D7(\#9)$   $E\flat7(\#9)$   $D+7(\#9)$   $G7(A0013)$   $G9sus$

93 94 95 96 97 98

99  $G7(A0013)$  101  $G13(\#9)$   $D+7(\#9)$   $D\flat13(\#11)$   $C13(\#9)$   $A\flat13$

99 100 101 102 103 104

105  $G13(\#9)$  107  $D\flat13$  108  $D\flat13$  109  $C13$  110  $D\flat13$

105 106 107 108 109 110

111  $C13$  112  $A\flat13$  113  $G13(\#9)$  114  $G13(\#9)$  115  $G13(\#9)$  116  $G13(\#9)$

111 112 113 114 115 116

117  $D13(\#9)$  118  $E\flat13(\#9)$  119  $D+7(\#9)$  120  $A\flat13(\#11)$   $G13(\#9)$  121-124

117 118 119 120 121-124

PIANO

(125)  $G^{13}(\sharp 9)$

125 126 127 128 129 130

(133)  $C^{13}sus$

131 132 133 134 135 136

(141)  $D^{13}(\sharp 9)$

137 138 139 140 141 142

$E^b13(\sharp 9)$   $D+7(\sharp 9)$

143 144 145 146 147

D.S. AL CODA

148 149 150 151 152

PIANO

♩ CODA

(157)

D13(#9)

153 154 155 156 157 158

159 160 161 162 163

164 165 166 167 168

169 170 171 172 173 174

175 176 177 178 179

# HAL LEONARD LITTLE BIG BAND

07011775

## ALL BLUES

By **MILES DAVIS**  
*Arranged by MIKE TOMARO*

### INSTRUMENTATION

Alto Sax	Solo Sheet
Tenor Sax	C Treble Clef Instruments
Baritone Sax	B $\flat$ Instruments
Trumpet 1	B $\flat$ Instruments
Trumpet 2	Bass Clef Instruments
Trombone	Alternate Alto Sax (substitute for Tpt.2)
Guitar	Alternate Tenor Sax (substitute for Tbn.)
Piano	Alternate Trombone (substitute for Bari. Sax)
Bass	
Drums	

**ADDITIONAL PARTS U.S. \$2.50**  
**SCORE (07011775) U.S. \$7.50**



**HAL•LEONARD®**  
CORPORATION  
7777 W. BLUEGROUND RD. P.O. BOX 13819 MILWAUKEE, WI 53213



# ALL BLUES

**By MILES DAVIS**  
*Arranged by MIKE TOMARO*

[illegible]

07011775

21 22 23 24 25 26 27 28 29 30

ALTO SAX

TENOR SAX

BARITONE SAX

TRUMPET 1

TRUMPET 2

TROMBONE

GUITAR

PIANO

BASS

DRUMS

07011775

57

**ALTO SAX**

**TENOR SAX**

**BARITONE SAX**

**TRUMPET 1**

**TRUMPET 2**

**TRUMPET 3**

**GUITAR**

**PIANO**

**Blues** **Alto** **Quint**

**BASS**

**DRUMS**



45

ALTO SAX

TENOR SAX

BARITONE SAX

TRUMPET 1

TRUMPET 2

TRUMPET 3

46

47

48

49

50

45

46

47

48

49

50

46

47

48

49

50

46

47

48

49

50

47

48

49

50

47

48

49

50

48

49

50

48

49

50

49

50

49

50

50

50

50

53

ALTO SAX

TENOR SAX

BARITONE SAX

TRUMPET 1

TRUMPET 2

TRUMPET 3

54

55

56

57

58

59

60

51

52

53

54

55

56

57

58

59

60

61

ALTO SAX

TENOR SAX

BARITONE SAX

62

TRUMPET 1

TRUMPET 2

TRUMPET 3

63

64

65

66

67

68

69

70

71

72

73

74

75

76

77

78

79

80

81

82

83

84

85

86

87

88

89

90

91

92

93

94

95

96

97

98

99

100

101

102

103

104

105

106

107

108

109

110

111

112

113

114

115

116

117

118

119

120

121

122

123

124

125

126

127

128

129

130

131

132

133

134

135

136

137

138

139

140

141

142

143

144

145

146

147

148

149

150

151

152

153

154

155

156

157

158

159

160

161

162

163

164

165

166

167

168

169

170

171

172

173

174

175

176

177

178

179

180

181

182

183

184

185

186

187

188

189

190

191

192

193

194

195

196

197

198

199

200

201

202

203

204

205

206

207

208

209

210

211

212

213

214

215

216

217

218

219

220

221

222

223

224

225

226

227

228

229

230

231

232

233

234

235

236

237

238

239

240

241

242

243

244

245

246

247

248

249

250

251

252

253

254

255

256

257

258

259

260

261

262

263

264

265

266

267

268

269

270

271

272

273

274

275

276

277

278

279

280

281

282

283

284

285

286

287

288

289

290

291

292

293

294

295

296

297

298

299

300

301

302

303

304

305

306

307

308

309

310

311

312

313

314

315

316

317

318

319

320

321

322

323

324

325

326

327

328

329

330

331

332

333

334

335

336

337

338

339

340

341

342

343

344

345

346

347

348

349

350

351

352

353

354

355

356

357

358

359

360

361

362

363

364

365

366

367

368

369

370

371

372

373

374

375

376

377

378

379

380

381

382

383

384

385

386

387

388

389

390

391

392

393

394

395

396

397

398

399

400

401

402

403

404

405

406

407

408

409

410

411

412

413

414

415

416

417

418

419

420

421

422

423

424

425

426

427

428

429

430

431

432

433

434

435

436

437

438

439

440

441

442

443

444

445

446

447

448

449

450

451

452

453

454

455

456

457

458

459

460

461

462

463

464

465

466

467

468

469

470

471

472

473

474

475

476

477

478

479

480

481

482

483

484

485

486

487

488

489

490

491

492

493

494

495

496

497

498

499

500

501

502

503

504

505

506

507

508

509

510

511

512

513

514

515

516

517

518

519

520

521

522

523

524

525

526

527

528

529

530

531

532

533

534

535

536

537

538

539

540

541

542

543

544

545

546

547

548

549

550

551

552

553

554

555

556

557

558

559

560

561

562

563

564

565

566

567

568

569

570

571

572

573

574

575

576

577

578

579

580

581

582

583

584

585

586

587

588

589

590

591

592

593

594

595

596

597

598

599

600

601

602

603

604

605

606

607

608

609

610

611

612

613

614

615

616

617

618

619

620

621

622

623

624

625

626

627

628

629

630

631

632

633

634

635

636

637

638

639

640

641

642

643

644

645

646

647

648

649

650

651

652

653

654

655

656

657

658

659

660

661

662

663

664

665

666

667

668

669

670

671

672

673

674

675

676

677

678

679

680

681

682

683

684

685

686

687

688

689

690

691

692

693

694

695

696

697

698

699

700

701

702

703

704

705

706

707

708

709

710

711

712

713

714

715

716

717

718

719

720

721

722

723

724

725

726

727

728

729

730

731

732

733

734

735

736

737

738

739

740

741

742

743

744

745

746

747

748

749

750

751

752

753

754

755

756

757

758

759

760

761

762

763

764

765

766

767

768

769

770

771

772

773

774

775

776

777

778

779

780

781

782

783

784

785

786

787

788

789

790

791

792

793

794

795

796

797

798

799

800

801

802

803

804

805

806

807

808

809

810

811

812

813

814

815

816

817

818

819

820

821

822

823

824

825

826

827

828

829

830

831

832

833

834

835

836

837

838

839

840

841

842

843

844

845

846

847

848

849

850

851

852

853

854

855

856

857

858

859

860

861

862

863

864

865

866

867

868

869

870

871

872

873

874

875

876

877

878

879

880

881

882

883

884

885

886

887

888

889

890

891

892

893

894

895

896

897

898

899

900

901

902

903

904

905

906

907

908

909

910

911

912

913

914

915

916

917

918

919

920

921

922

923

924

925

926

927

928

929

930

931

932

933

934

935

936

937

938

939

940

941

942

943

944

945

946

947

948

949

950

951

952

953

954

955

956

957

958

959

960

961

962

963

964

965

966

967

968

969

970

971

972

973

974

975

976

977

978

979

980

981

982

983

984

985

986

987

988

989

990

991

992

993

994

995

996

997

998

999

1000

77 (OPEN FOR SOLOS - BACKGROUND ON CUS)

TO CORON

ALTO SAX

TENOR SAX

BARIOTONE SAX

TRUMPET 1

TRUMPET 2

TRUMPONE

GUINAR

PIANO

BASS

DRUMS

78 79 80

71 72 73 74 75 76 77 78 79 80

The image displays a musical score for the song "The Sound of Silence" by Simon & Garfunkel. The score is presented in two parts: a piano arrangement on the left and a full orchestral score on the right. The piano part includes staves for Alto Sax, Tenor Sax, Baritone Sax, Trumpet 1, Trumpet 2, Trombone, Guitar, and Piano. The orchestral score includes staves for Trumpet 1, Trumpet 2, Trombone, Guitar, Bass, and Drums. The score is in G major, 4/4 time, and includes a key signature change to E major for the final section. The piano part features a melodic line in the right hand and a harmonic accompaniment in the left hand. The orchestral score provides a full instrumental arrangement, including woodwinds, brass, and percussion. The score is marked with a rehearsal mark 85 and includes a key signature change to E major for the final section.

07011775

91 92 93 94 95 96 97 98 99 100

ALTO SAX

TENOR SAX

BARIOTONE SAX

TRUMPET 1

TRUMPET 2

TRUMPET 3

QUARTET

PIANO

SKES

DRUMS

101

ALTO SAX

104

TENOR SAX

105

BARITONE SAX

106

TRUMPET 1

107

TRUMPET 2

108

TRUMPET 3

109

GUITAR

110

PIANO

111

BASS

112

DRUMS

117

ALTO SAX

TENOR SAX

BARITONE SAX

TRUMPET 1

TRUMPET 2

TRUMPET 3

QUINTET

PIANO

BASS

DRUMS

118 119 120

121 122 123 124 125 126 127 128 129 130



195

ALTO SAX

TENOR SAX

BARIOTONE SAX

TRUMPET 1

TRUMPET 2

TRUMPONE

196

197

198

199

200

201

202

203

204

205

206

207

208

209

210

211

212

213

214

215

216

217

218

219

220

221

222

223

224

225

226

227

228

229

230

231

232

233

234

235

236

237

238

239

240

241

242

243

244

245

246

247

248

249

250

251

252

253

254

255

256

257

258

259

260

261

262

263

264

265

266

267

268

269

270

271

272

273

274

275

276

277

278

279

280

281

282

283

284

285

286

287

288

289

290

291

292

293

294

295

296

297

298

299

300

301

302

303

304

305

306

307

308

309

310

311

312

313

314

315

316

317

318

319

320

321

322

323

324

325

326

327

328

329

330

331

332

333

334

335

336

337

338

339

340

341

342

343

344

345

346

347

348

349

350

351

352

353

354

355

356

357

358

359

360

361

362

363

364

365

366

367

368

369

370

371

372

373

374

375

376

377

378

379

380

381

382

383

384

385

386

387

388

389

390

391

392

393

394

395

396

397

398

399

400

401

402

403

404

405

406

407

408

409

410

411

412

413

414

415

416

417

418

419

420

421

422

423

424

425

426

427

428

429

430

431

432

433

434

435

436

437

438

439

440

441

442

443

444

445

446

447

448

449

450

451

452

453

454

455

456

457

458

459

460

461

462

463

464

465

466

467

468

469

470

471

472

473

474

475

476

477

478

479

480

481

482

483

484

485

486

487

488

489

490

491

492

493

494

495

496

497

498

499

500

501

502

503

504

505

506

507

508

509

510

511

512

513

514

515

516

517

518

519

520

521

522

523

524

525

526

527

528

529

530

531

532

533

534

535

536

537

538

539

540

541

542

543

544

545

546

547

548

549

550

551

552

553

554

555

556

557

558

559

560

561

562

563

564

565

566

567

568

569

570

571

572

573

574

575

576

577

578

579

580

581

582

583

584

585

586

587

588

589

590

591

592

593

594

595

596

597

598

599

600

601

602

603

604

605

606

607

608

609

610

611

612

613

614

615

616

617

618

619

620

621

622

623

624

625

626

627

628

629

630

631

632

633

634

635

636

637

638

639

640

641

642

643

644

645

646

647

648

649

650

651

652

653

654

655

656

657

658

659

660

661

662

663

664

665

666

667

668

669

670

671

672

673

674

675

676

677

678

679

680

681

682

683

684

685

686

687

688

689

690

691

692

693

694

695

696

697

698

699

700

701

702

703

704

705

706

707

708

709

710

711

712

713

714

715

716

717

718

719

720

721

722

723

724

725

726

727

728

729

730

731

732

733

734

735

736

737

738

739

740

741

742

743

744

745

746

747

748

749

750

751

752

753

754

755

756

757

758

759

760

761

762

763

764

765

766

767

768

769

770

771

772

773

774

775

776

777

778

779

780

781

782

783

784

785

786

787

788

789

790

791

792

793

794

795

796

797

798

799

800

801

802

803

804

805

806

807

808

809

810

811

812

813

814

815

816

817

818

819

820

821

822

823

824

825

826

827

828

829

830

831

832

833

834

835

836

837

838

839

840

841

842

843

844

845

846

847

848

849

850

851

852

853

854

855

856

857

858

859

860

861

862

863

864

865

866

867

868

869

870

871

872

873

874

875

876

877

878

879

880

881

882

883

884

885

886

887

888

889

890

891

892

893

894

895

896

897

898

899

900

901

902

903

904

905

906

907

908

909

910

911

912

913

914

915

916

917

918

919

920

921

922

923

924

925

926

927

928

929

930

931

932

933

934

935

936

937

938

939

940

941

942

943

944

945

946

947

948

949

950

951

952

953

954

955

956

957

958

959

960

961

962

963

964

965

966

967

968

969

970

971

972

973

974

975

976

977

978

979

980

981

982

983

984

985

986

987

988

989

990

991

992

993

994

995

996

997

998

999

1000

1001

1002

1003

1004

1005

1006

1007

1008

1009

1010

1011

1012

1013

1014

1015

1016

1017

1018

1019

1020

1021

1022

1023

1024

1025

1026

1027

1028

1029

1030

1031

1032

1033

1034

1035

1036

1037

1038

1039

1040

1041

1042

1043

1044

1045

1046

1047

1048

1049

1050

1051

1052

1053

1054

1055

1056

1057

1058

1059

1060

1061

1062

1063

1064

1065

1066

1067

1068

1069

1070

1071

1072

1073

1074

1075

1076

1077

1078

1079

1080

1081

1082

1083

1084

1085

1086

1087

1088

1089

1090

1091

1092

1093

1094

1095

1096

1097

1098

1099

1100

1101

1102

1103

1104

1105

1106

1107

1108

1109

1110

1111

1112

1113

1114

1115

1116

1117

1118

1119

1120

1121

1122

1123

1124

1125

1126

1127

1128

1129

1130

1131

1132

1133

1134

1135

1136

1137

1138

1139

1140

1141

1142

1143

1144

1145

1146

1147

1148

1149

1150

1151

1152

1153

1154

1155

1156

1157

1158

1159

1160

1161

1162

1163

1164

1165

1166

1167

1168

1169

1170

1171

1172

1173

1174

1175

1176

1177

1178

1179

1180

1181

1182

1183

1184

1185

1186

1187

1188

1189

1190

1191

1192

1193

1194

1195

1196

1197

1198

1199

1200

1201

1202

1203

1204

1205

1206

1207

1208

1209

1210

1211

1212

1213

1214

1215

1216

1217

1218

1219

1220

1221

1222

1223

1224

1225

1226

1227

1228

1229

1230

1231

1232

1233

1234

1235

1236

1237

1238

1239

1240

1241

1242

1243

1244

1245

1246

1247

1248

1249

1250

1251

1252

1253

1254

1255

1256

1257

1258

1259

1260

1261

1262

1263

1264

1265

1266

1267

1268

1269

1270

1271

1272

1273

1274

1275

1276

1277

1278

1279

1280

1281

1282

1283

1284

1285

1286

1287

1288

1289

1290

1291

1292

1293

1294

1295

1296

1297

1298

1299

1300

1301

1302

1303

1304

1305

1306

1307

1308

1309

1310

1311

1312

1313

1314

1315

1316

1317

1318

1319

1320

1321

1322

1323

1324

1325

1326

1327

1328

1329

1330

1331

1332

1333

1334

1335

1336

1337

1338

1339

1340

1341

1342

1343

1344

1345

1346

1347

1348

1349

1350

1351

1352

1353

1354

1355

1356

1357

1358

1359

1360

1361

1362

1363

1364

1365

1366

1367

1368

1369

1370

1371

1372

1373

1374

1375

1376

1377

1378

1379

1380

1381

1382

1383

1384

1385

1386

1387

1388

1389

1390

1391

1392

1393

1394

1395

1396

1397

1398

1399

1400

1401

1402

1403

1404

1405

1406

1407

1408

1409

1410

1411

1412

1413

1414

1415

1416

1417

1418

1419

1420

1421

1422

1423

1424

1425

1426

1427

1428

1429

1430

1431

1432

1433

1434

1435

1436

1437

1438

1439

1440

1441

1442

1443

1444

1445

1446

1447

1448

1449

1450

1451

1452

1453

1454

1455

1456

1457

1458

1459

1460

1461

1462

1463

1464

1465

1466

1467

1468

1469

1470

1471

1472

1473

1474

1475

1476

1477

1478

1479

1480

1481

1482

1483

1484

1485

1486

1487

1488

1489

1490

1491

1492

1493

1494

1495

1496

1497

1498

1499

1500

1501

1502

1503

1504

1505

1506

1507

1508

1509

1510

1511

1512

1513

1514

1515

1516

1517

1518

1519

1520

1521

1522

1523

1524

1525

1526

1527

1528

1529

1530

1531

1532

1533

1534

1535

1536

1537

1538

1539

1540

1541

1542

1543

1544

1545

1546

1547

1548

1549

1550

1551

1552

1553

1554

1555

1556

1557

1558

1559

1560

1561

1562

1563

1564

1565

1566

1567

1568

1569

1570

1571

1572

1573

1574

1575

1576

1577

1578

1579

1580

1581

1582

1583

1584

1585

1586

1587

1588

1589

1590

1591

1592

1593

1594

1595

1596

1597

1598

1599

1600

1601

1602

1603

1604

1605

1606

1607

1608

1609

1610

1611

1612

1613

1614

1615

1616

1617

1618

1619

1620

1621

1622

1623

1624

1625

1626

1627

1628

1629

1630

1631

1632

1633

1634

1635

1636

1637

1638

1639

1640

1641

1642

1643

1644

1645

133 134 135 136 137 138 139 140

ALTO SAX

TENOR SAX

BARITONE SAX

TRUMPET 1

TRUMPET 2

TROMBONE

GUITAR

CLARINETS

PIANO

AS WRITTEN

AS WRITTEN

BASS

DRUMS

141

ALTO SAX

TENOR SAX

BARITONE SAX

TRUMPET 1

TRUMPET 2

TRUMPET 3

QUARTET

PIANO

BASS

DRUMS

142 143 144 145 146 147 148 149 150 151 152

07011775

157

ALTO SAX

TENOR SAX

BARITONE SAX

TRUMPET 1

TRUMPET 2

TRUMPET 3

GIHTR

PIANO

BASS

DRUMS

158 159 160 161

The image displays a musical score for the song "The Sound of Silence" by Simon & Garfunkel. The score is written for a full band and includes vocal parts for Paul Simon and Art Garfunkel. The instruments listed are Alto Sax, Tenor Sax, Baritone Sax, Trumpet 1, Trumpet 2, Trombone, Guitar, Piano, Bass, and Drums. The score is divided into measures, with measure numbers 165, 166, 167, 168, 169, 170, and 171 indicated at the bottom. The key signature is one sharp (F#), and the time signature is 4/4. The score includes various musical notations such as notes, rests, and dynamic markings like *mf* (mezzo-forte) and *pp* (pianissimo). There are also performance instructions in parentheses, such as "(HARMON - NO STRA)" and "(CUT NOTE)". The score is presented in a clean, professional layout with clear notation and a well-organized structure.

173

(SUB-TONE)

ALTO SAX

TENOR SAX

BARITONE SAX

TRUMPET 1

TRUMPET 2

TRUMPET 3

QUITAR

PIANO

BASS

DRUMS

174

175

176

177

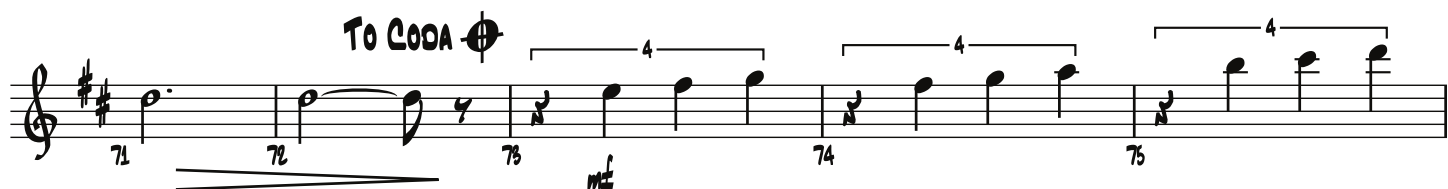
178

179

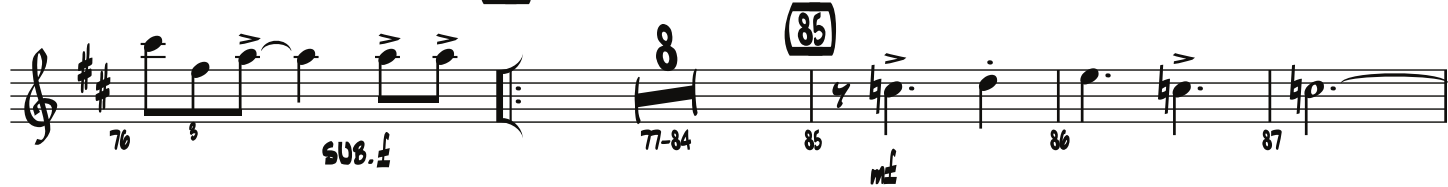
**By MILES DAVIS**  
*Arranged by MIKE TOMARO*

All Rights Reserved Used by Permission

# TENOR SAX



(77) (OPEN FOR SOLOS - BACKGROUNDS ON CUE)





# TENOR SAX

**(125)**

125 126 127 128 129

**(133)**

130 131 132 133 134

135 136 137 138 139

**(141)**

**D.S. AL CODA**

140 141 142 143 144-152

**⊕ CODA**

153-156

**(157)**

157 158 159 160 161 162 163

**(165)**

164 165 166 167 168 169-172

**(173)**

**(SUB-TONE)**

173-174 175 176 177 178 179

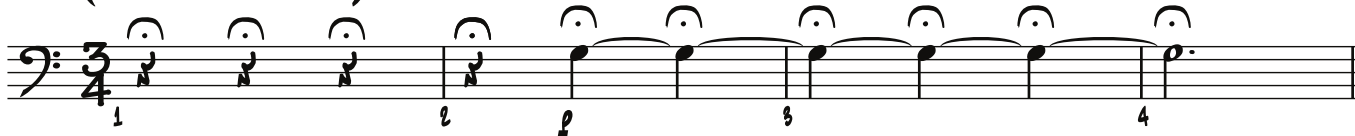
# ALL BLUES

**TROMBONE**

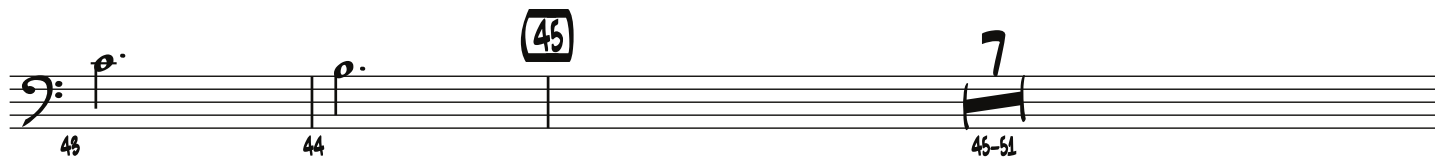
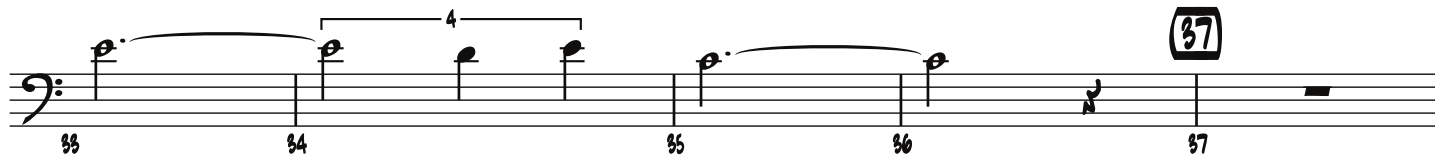
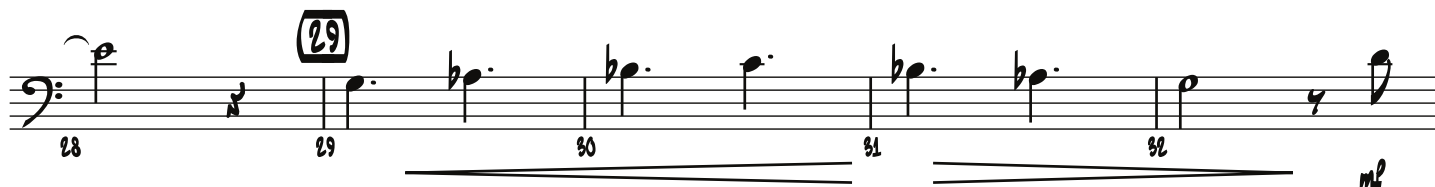
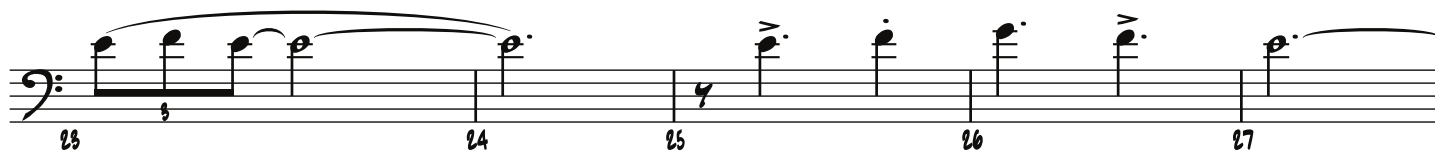
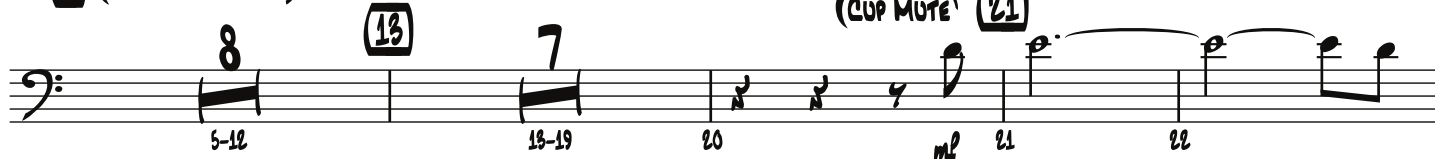
**By MILES DAVIS**

*Arranged by MIKE TOMARO*

**(RUBATO - DIRECTED)**



**(5) (JAZZ WALTZ)** (♩ =  $\overset{\frown}{\text{♩}} \overset{\frown}{\text{♩}} \overset{\frown}{\text{♩}}$ )



Copyright © 1959 JAZZ HORN MUSIC CORP.

Copyright Renewed

This arrangement Copyright © 2010 JAZZ HORN MUSIC CORP.

All Rights Controlled and Administered by SONGS OF UNIVERSAL, INC.

All Rights Reserved Used by Permission

# TROMBONE

**(OPEN 53)** 

52 *mf* 53 54 55 56 57

58 59 60 **(61)** 61 62 63

64 *mf* 65 66 67 68

**(69)** 69 70 71 72 **TO CODA**  73 *mf*

**(77)** **(OPEN FOR SOLOS - BACKGROUNDS ON CUE)**

74 75 76 *SUB. mf* 77 78

79 80 81 82 83

**(85)** 84 85 86 87 88

89 90 91 92 93 **(93)**

94 95 96 97 98-100 **3**

# TROMBONE

(101)



(109)



(117)



(125)



(133)

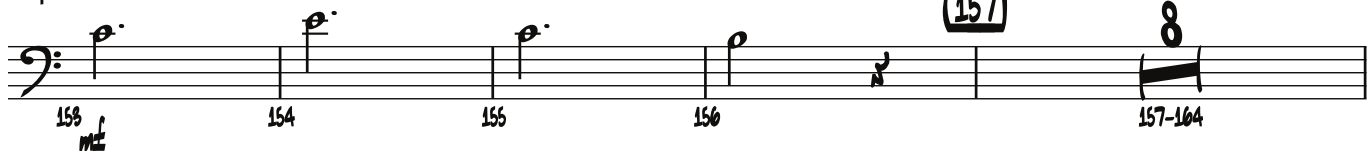


(141)



D.S. AL CODA

♩ CODA



(165)

(CUP MUTE)



(173)



# ALL BLUES

## TRUMPET 1

By MILES DAVIS

Arranged by MIKE TOMARO

**(RUBATO - DIRECTED)**

**(SLOW TRILL)** *tr*

**(5) (JAZZ WALTZ)** (♩ =  $\frac{3}{4}$ )

**(13)** **(7)** **(HARMON - NO STEM)** **(21)**

**(29)** **(37)** **(45)** **(7)**

Copyright © 1959 JAZZ HORN MUSIC CORP.


Copyright Renewed


This arrangement Copyright © 2010 JAZZ HORN MUSIC CORP.

All Rights Controlled and Administered by SONGS OF UNIVERSAL, INC.


All Rights Reserved Used by Permission

# TRUMPET 1

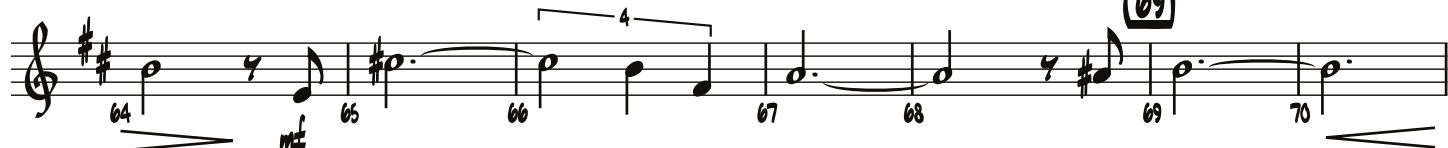
(OPEN) (53) 




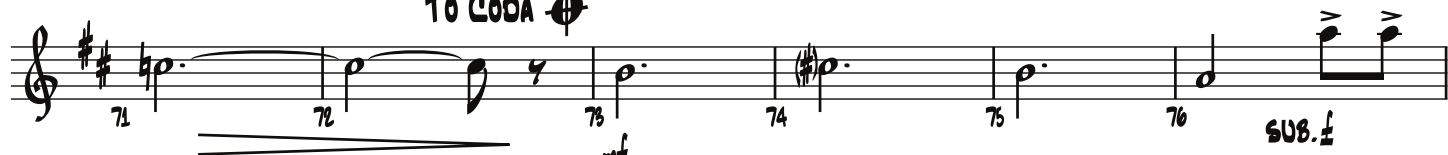
(61)



(69)

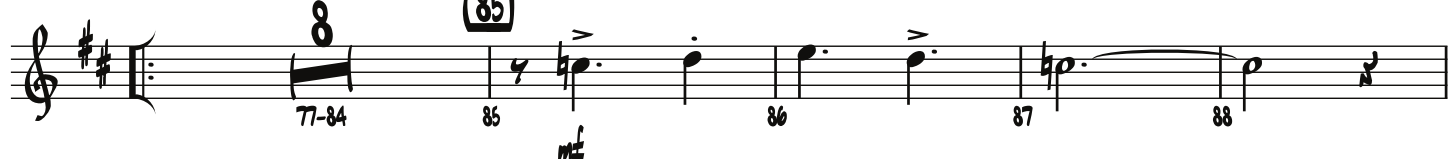


TO CODA 




(77) (OPEN FOR SOLOS - BACKGROUNDS ON CUE)

(85)



(93)



(98-100)



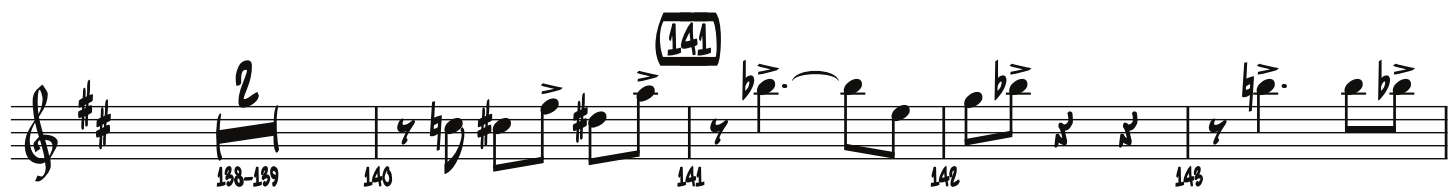
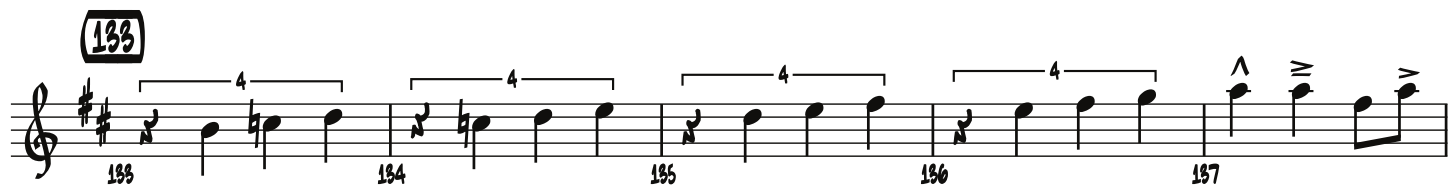
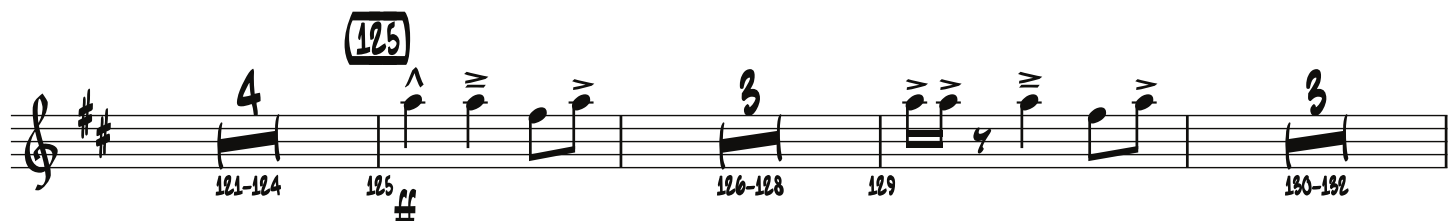
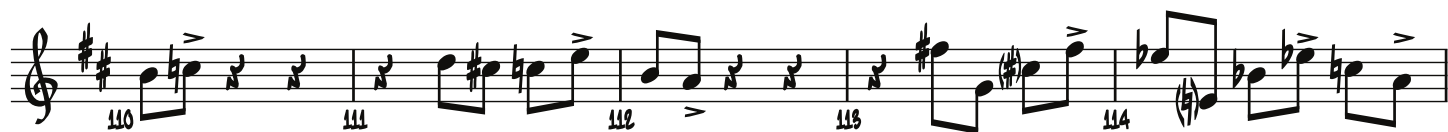
(101)



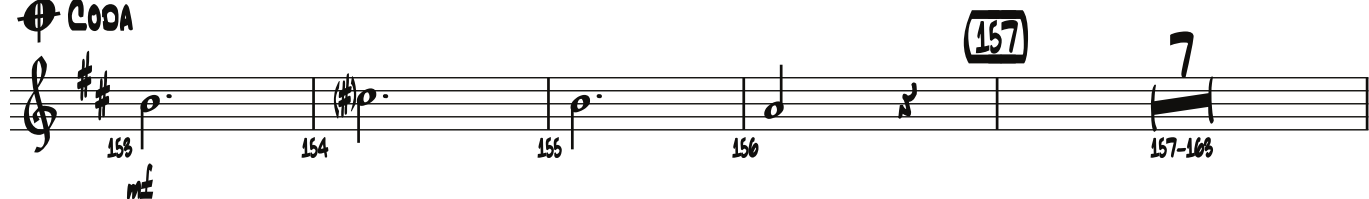
(109)



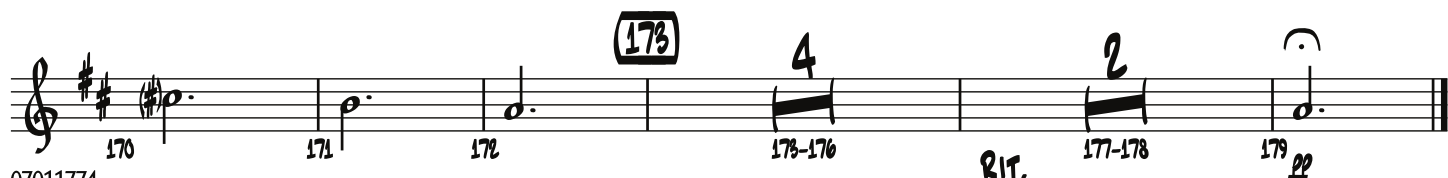
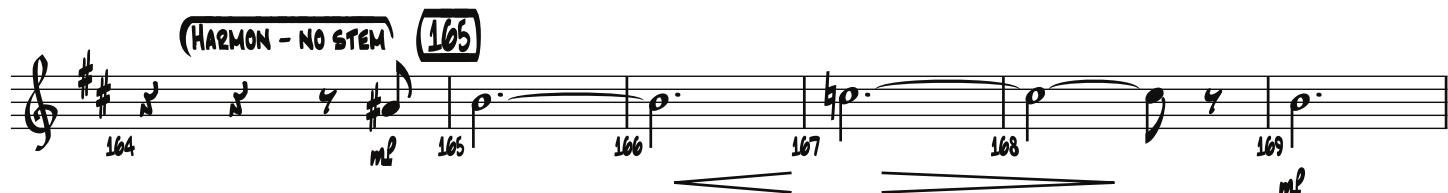
# TRUMPET 1



## ⌂ CODA



(HARMON - NO STEM)



# ALL BLUES

TRUMPET 2

By MILES DAVIS

Arranged by MIKE TOMARO

**(RUBATO - DIRECTED)**  
**(SLOW TRILL)** *tr*

**(5) (JAZZ WALTZ)** (♩ = ♩<sup>3</sup>)

**(13)** **(7)** **(HARMON - NO STEM)** **(21)**

**(29)** **(37)** **(45)** **(7)**

Copyright © 1959 JAZZ HORN MUSIC CORP.

Copyright Renewed

This arrangement Copyright © 2010 JAZZ HORN MUSIC CORP.

All Rights Controlled and Administered by SONGS OF UNIVERSAL, INC.

All Rights Reserved Used by Permission

07011774

All Blues - 1



# TRUMPET 2

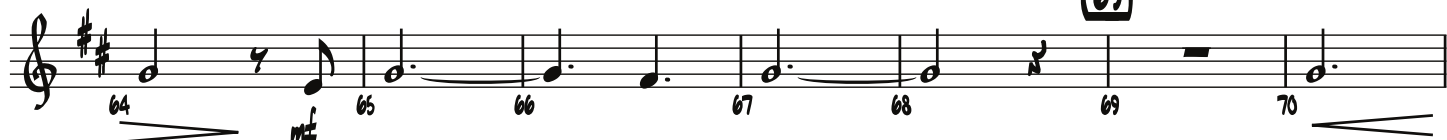
(OPEN) (53)



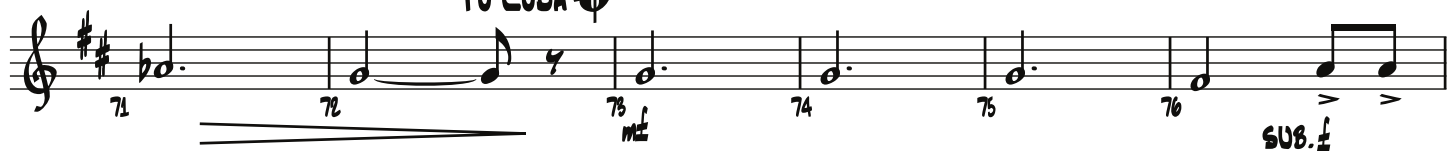
(61)



(69)



TO CODA



(77) (OPEN FOR SOLOS - BACKGROUNDS ON CUE)

(85)



(93)



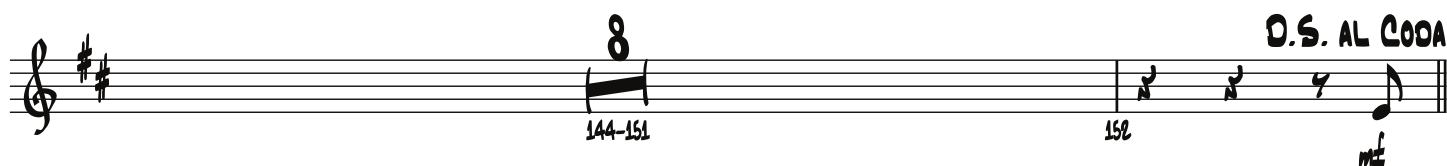
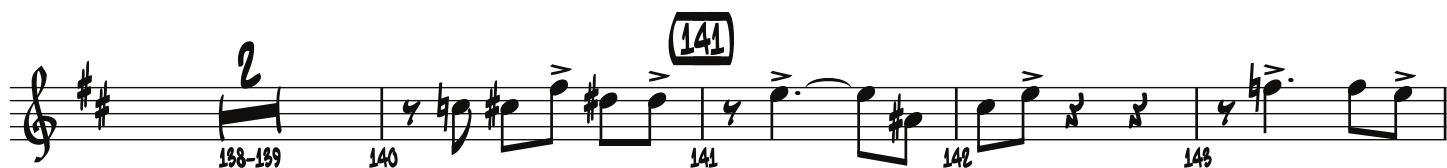
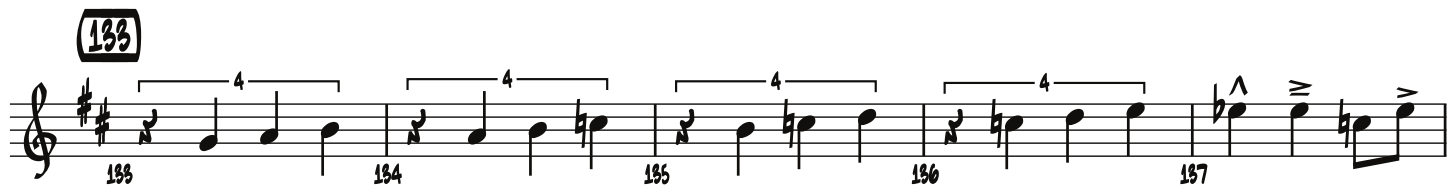
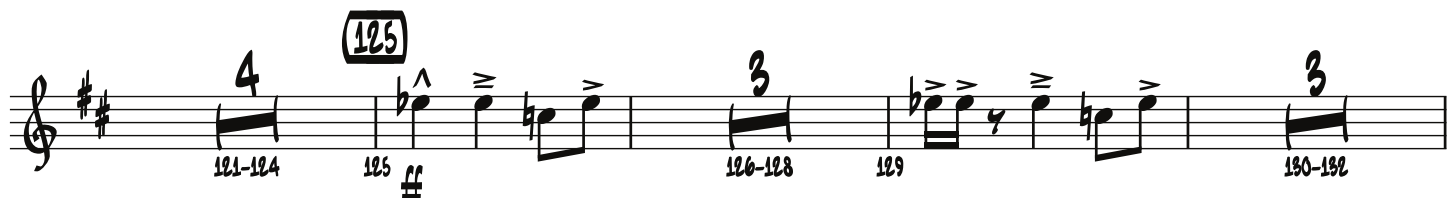
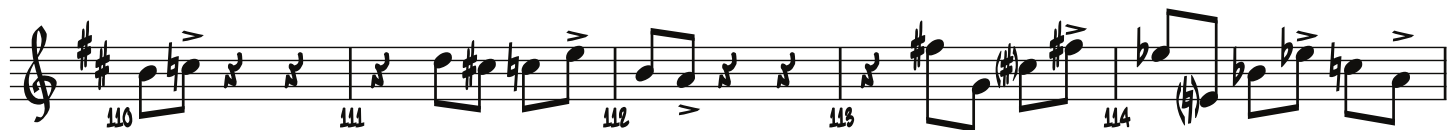
(101)



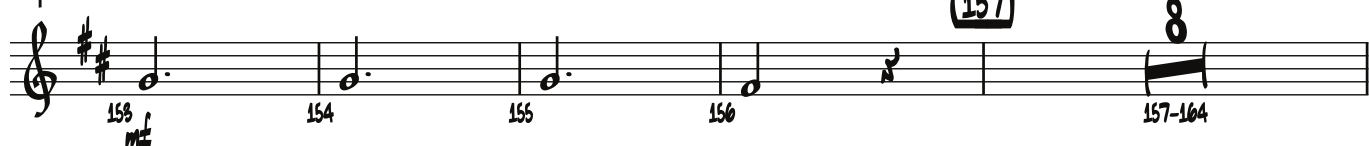
(109)



# TRUMPET 2

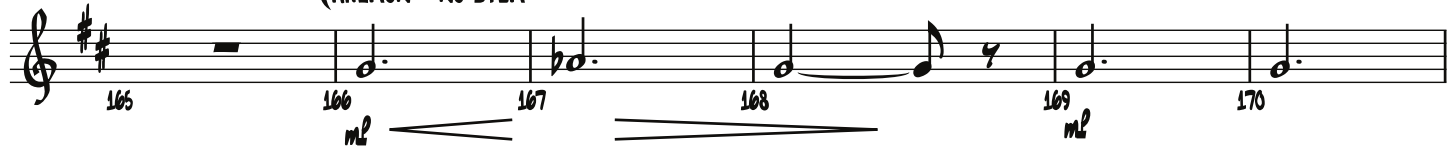


**CODA**



(165)

(HARMON - NO STEM)



(173)

