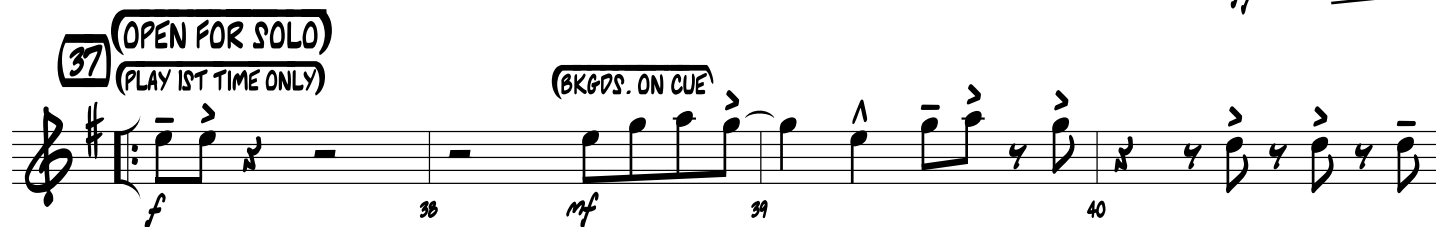
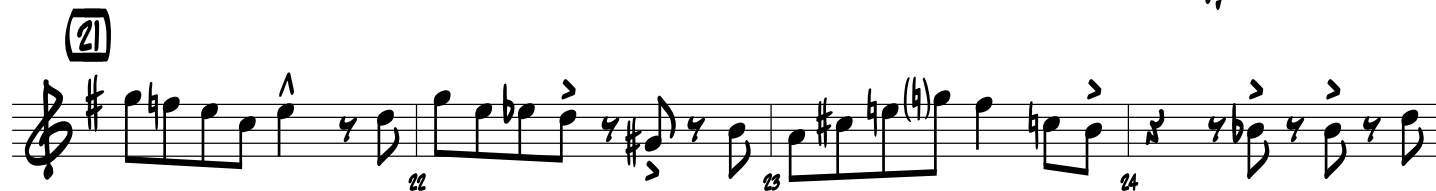
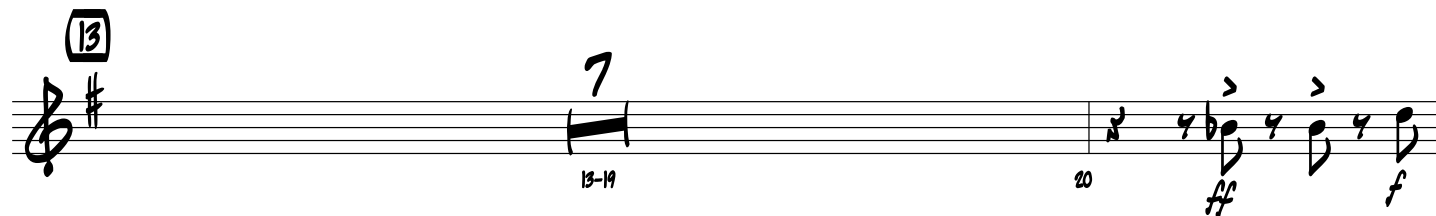


DOXY

ALTERNATE ALTO SAX

By **SONNY ROLLINS**
Arranged by **MARK TAYLOR**

(MEDIUM SWING) (♩ = ♩^3)



Copyright © 1963 Prestige Music
Copyright Renewed

This arrangement Copyright © 2011 Prestige Music
International Copyright Secured All Rights Reserved

ALTERNATE ALTO SAX

41 42 43 44

45

f 46 47 48 **(PLAY LAST TIME ONLY)**

49 *mf* 50 51 *f* 52 *ff*

53 (ON CUE)

f 54 *mf* 55 3 *f* 56 *mf*

57 *f* 58 59 60

61

ff 62 *f* 63 64

65 *mp* 66 *f* 67 68 *ff*

69

7 *f* 76

77

ff 78 *f* 79 80-85

86 *f* 87 88 *ff* 89

DOXY

ALTERNATE TENOR SAX

By **SONNY ROLLINS**
Arranged by **MARK TAYLOR**

(MEDIUM SWING) (♩ = ♩^3)

ff 2 3 4 f

[5] 6 7 8 9

[13] 10 11 12 13 14

15 16 17 18 19

[21] 20 21 22 23

24 25 26 27

[29] 28 29 30 31 32

33 34 35 36 ff

(OPEN FOR SOLOS)

[37] (PLAY 1ST TIME ONLY)

(BKGDS. ON CUE)

f 38 mf 39 40 41

Copyright © 1963 Prestige Music

Copyright Renewed

This arrangement Copyright © 2011 Prestige Music
International Copyright Secured All Rights Reserved

ALTERNATE TENOR SAX

42 43 44 45 **(45)** 46 **(PLAY LAST TIME ONLY)**

47 48 49 50 51 52 **ff**

(53) (ON CUE) 54 55 56 57 58 59 60 61 **ff** 62 63 64 65 66 67 68 69 70 71 72 73 74 75 76 77 78 79 80 81 82 83 84 85 86 87 88 89 **ff**

DOXY

ALTERNATE TROMBONE

By **SONNY ROLLINS**
Arranged by **MARK TAYLOR**

(MEDIUM SWING) (♩ = ♩^3)

ff 2 3 4 f

5

6 7 8 9

10 11 12 14

13

15 16 17 18 19

20 22 23

21

24 25 26 27

28 29 30 31 32

33 34 35 36

37 (OPEN FOR SOLOS) (PLAY 1ST TIME ONLY) (BKGS. ON CUE)

38 39 40 41

ff

Copyright © 1963 Prestige Music

Copyright Renewed

This arrangement Copyright © 2011 Prestige Music
International Copyright Secured All Rights Reserved

ALTERNATE TROMBONE

42 43 44 45 **(45)** **(PLAY LAST TIME ONLY)**

47 48 49 50 51 52 **(53) (ON CUE)**

54 55 56 57 58 59 60 **(61)**

62 63 64 65 66 67 68 **(69)**

70 71 72 73 74 75 76 **(77)**

78 79 80 81 82 83 84 85 **(b)**

86 87 88 89 **(b)**

ff

DOXY

ALTO SAX

By **SONNY ROLLINS**
Arranged by **MARK TAYLOR**

(MEDIUM SWING) (♩ = ♩^3)

5

13

21

29

37 (OPEN FOR SOLOS)
(PLAY 1ST TIME ONLY)

(BKGDS. ON CUE)

41

42

43

44

Copyright © 1963 Prestige Music

Copyright Renewed

This arrangement Copyright © 2011 Prestige Music
International Copyright Secured All Rights Reserved

ALTO SAX

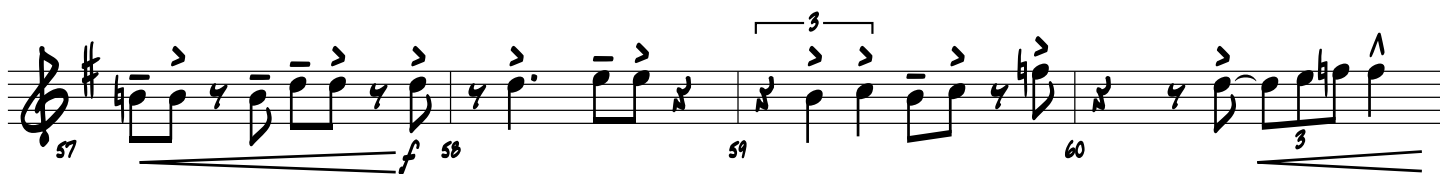
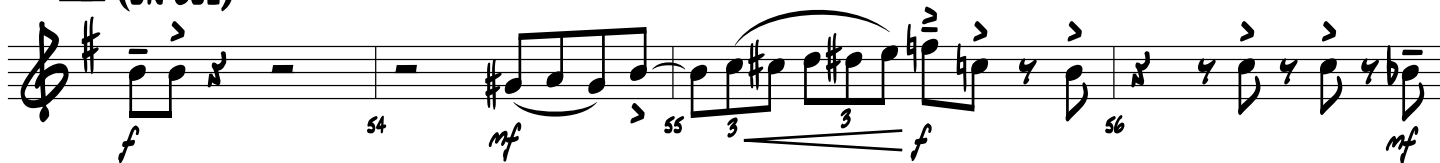
45



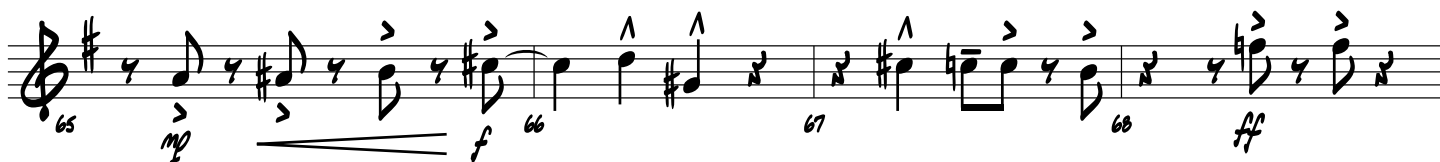
(PLAY LAST TIME ONLY)



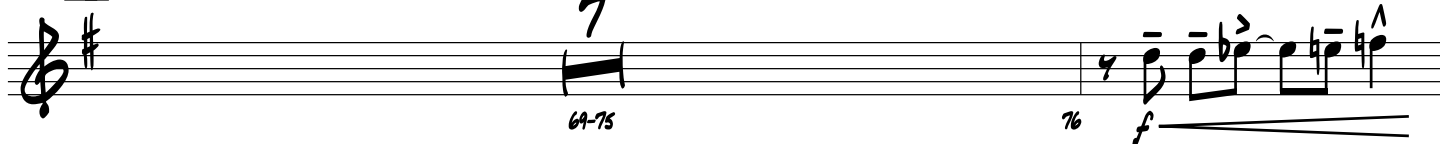
53 (ON CUE)



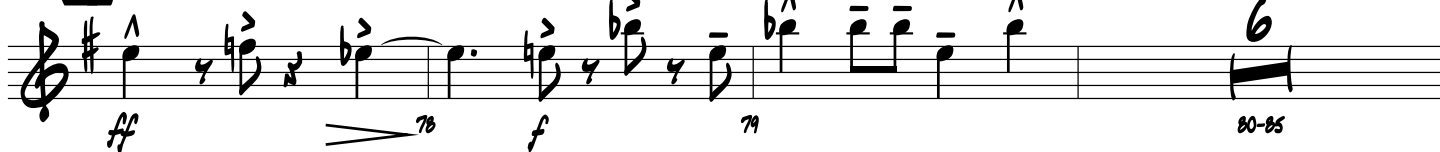
61



69



77



DOXY

BARITONE SAX

By **SONNY ROLLINS**
Arranged by **MARK TAYLOR**

(MEDIUM SWING) (♩ = ♩^3)

5

13

21

29

37 (OPEN FOR SOLOS) (PLAY 1ST TIME ONLY) (BKGDS. ON CUE)

41

Copyright © 1963 Prestige Music

Copyright Renewed

This arrangement Copyright © 2011 Prestige Music
International Copyright Secured All Rights Reserved

BARITONE SAX

(45)



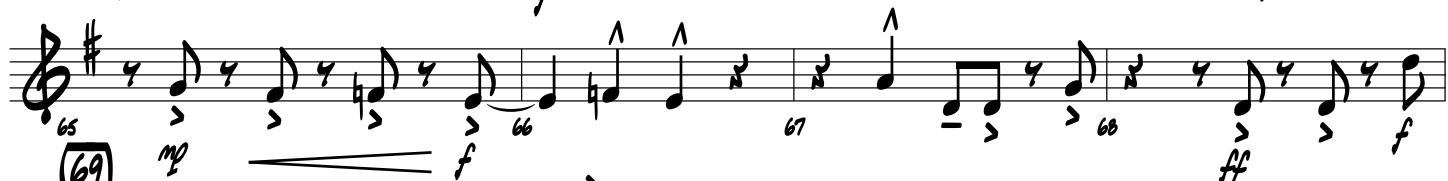
(PLAY LAST TIME ONLY)



(53) (ON CUE)



(61)



(69)



(77)



DOXY

BASSBy **SONNY ROLLINS**
Arranged by **MARK TAYLOR****(MEDIUM SWING)** (♩ = $\frac{3}{4}$)

Chord symbols and measure numbers are as follows:

- Measures 1-4: Bb13, Eb13, D+7(#9), G+7(b9), C9, F+7(#9), Bb13, F+7
- Measures 5-9: Bb13, Eb13, D+7(#9), G+7(b9), C7(b9), F13, Bb13, F+7, Bb13, Eb13
- Measures 10-14: D+7(#9), Db9, C7(b9), F13, F+7, Bb13, B9(#11), Bb+7(#9), Bb7(#9)
- Measures 15-19: Eb13, E07, Bb13, Eb13, D+7(#9), G+7(b9), C7(b9), F13, Bb13
- Measures 20-24: F+7, Bb13, Eb13, D+7(#9), G7(b9), C7(b9), F13, Bb13, F+7
- Measures 25-29: Bb13, Eb13, D+7(#9), Db9, C7(b9), F+7, D+7 Eb+7, F+7
- Measures 30-32: Bb13, B9(#11), Bb+7(#9), Bb7(#9), Eb13, E07
- Measures 33-36: Bb13, Eb13, D+7(#9), G+7(b9), C9, F13, Bb13, F+7
- Measures 37-42: Bb13, A+7(b9), Ab13, G+7(b9), C7(b9), F13, Bb13, F+7, Bb13, Eb13, D+7(#9), Db13(#11)

Copyright © 1963 Prestige Music

Copyright Renewed

This arrangement Copyright © 2011 Prestige Music
International Copyright Secured All Rights Reserved

BASS

(45)

Bb13

B13

Bb13

Eb13



E07

Bb13

D+7(#9)

G+7(b9)

C+7(b9)

F+7(#9)

Bb13

F+7



(53) (ON CUE)

Bb13

Eb13

D+7(#9)

G7(b9)

C7(b9)

F13

Bb13

F+7



Bb13

Eb13

D+7(#9)

Db9

C7(b9)

F+7



(61)

Bb13

B13

Bb13

Eb13

E07



ff

Bb13

Eb13

D+7(#9)

G+7(b9)

C+7(b9)

F+7(#9)

Bb13

F+7



(69)

Bb13

Eb13

D+7(#9)

G+7(b9)

C7(b9)

F13

Bb13

F+7



f

Bb13

Eb13

D+7(#9)

G+7(b9)

C7(b9)

F+7

D+7

Eb+7

F+7



(77)

Bb13

B9(#11)

Bb+7(#9)

Bb7(#9)

Eb13

E07

Bb13

Eb13



ff

D+7(#9)

G+7(b9)

C7(b9)

F13

Bb13

A13

Ab13

G13

C7(b9)

F13



82

83

84

85



A13

Ab13

G13

C7(b9)

F13

Bb13

A13

G+7(#9)

Gb+9

F+7(#9)

Bb13



86

87

88

89

DOXY

SOLO SHEET
BASS CLEF INSTRUMENTS

By **SONNY ROLLINS**
Arranged by **MARK TAYLOR**

37 (OPEN FOR SOLOS - BACKGROUNDS ON CUE)

37 (OPEN FOR SOLOS - BACKGROUNDS ON CUE)

38

39

40

41

42

43

44

45

46

47

48

49

50

51

52

CLEAR NOTEHEADS = CHORD TONES

DOXY

SOLO SHEET
Bb INSTRUMENTS

By **SONNY ROLLINS**
Arranged by **MARK TAYLOR**

(37) (OPEN FOR SOLOS - BACKGROUNDS ON CUE)

Chords: C¹³, B^{+7(b9)}, B^{b13}, A^{+7(b9)}, D^{7(b9)}, G¹³, C¹³, G⁺⁷, C¹³, F¹³, E^{+7(#9)}, E^{b13(#11)}, D^{7(b9)}, G⁺⁷, C¹³, C^{#13}, C¹³, F¹³, F^{#07}, C¹³, F¹³, E^{+7(#9)}, A^{+7(b9)}, D^{+7(b9)}, G^{+7(#9)}, C¹³, G⁺⁷.

Measures: 37, 38, 39, 40, 41, 42, 43, 44, 45, 46, 47, 48, 49, 50, 51, 52.

Legend: CLEAR NOTEHEADS = CHORD TONES

DOXY

SOLO SHEET
C TREBLE CLEF INSTRUMENTS

By **SONNY ROLLINS**
Arranged by **MARK TAYLOR**

(37) (OPEN FOR SOLOS - BACKGROUNDS ON CUE)

37 (OPEN FOR SOLOS - BACKGROUNDS ON CUE)

38

39

40

41

42

43

44

(45)

46

47

48

49

50

51

52

CLEAR NOTEHEADS = CHORD TONES

DOXY

DRUMS

By **SONNY ROLLINS**
 Arranged by **MARK TAYLOR**

(MEDIUM SWING) (♩ = $\frac{3}{4}$ ♩)

(ENS.) **(FILL)**

(2-FEEL) **ff**

(5) **(RIDE)**

f **(SIM.)** **(ENS.)** **(4-FEEL)**

(13) **(H.H. W/FOOT)** **(SIM.)** **(FILL)** **(ENS.)**

(2-FEEL) **ff**

(21) **(4-FEEL)**

f **(ENS.)**

(29) **ff** **f** **(FILL)** **(ENS.)**

(37) **(OPEN FOR SOLOS - BACKGROUNDS ON CUE)** **(PLAY 1ST TIME ONLY)**

Copyright © 1963 Prestige Music
 Copyright Renewed

This arrangement Copyright © 2011 Prestige Music
 International Copyright Secured All Rights Reserved

DRUMS

45

43 44 46 47 (PLAY LAST TIME ONLY) -- 7

48 (ON CUE) 49 50 51 52

53 (ENS.) 54 *mf* 55 *f* 56 *mf*

57 *f* 58 59 60

61 (FILL) --- 7

62 *f* 63 64

65 *mp* 66 *f* 67 68 *ff*

69 (2- FEEL)

70 71 72 73 74

75 76 *ff* 77 78 *f* 79

80 81 82 83 84

85 86 87 88 *ff* 89 (H.H.)

DOXY

GUITAR

By **SONNY ROLLINS**
Arranged by **MARK TAYLOR**

(MEDIUM SWING) (♩ = ♩^3)

Chords: B♭13, E♭13, D+7(♯9), G+7(b9), C9, F+7(♯9), B♭13, F+7, B♭13, E♭13, D+7(♯9), D♭9, C7(b9), F13, F+7, B♭13, B9(♯11), B♭7(♯9), B♭7(♯9), E♭13, E♭13, D+7(♯9), G+7(b9), C7(b9), F13, B♭13, F+7, B♭13, E♭13, D+7(♯9), G7(b9), C7(b9), F13, B♭13, F+7, B♭13, E♭13, D+7(♯9), D♭9, C7(b9), F+7, D+7, E♭7, F+7, B♭13, B9(♯11), B♭7(♯9), B♭7(♯9), E♭13, E♭13, B♭13, E♭13, D+7(♯9), G+7(b9), C9, F13, B♭13, F+7, B♭13, E♭13, D+7(♯9), D♭13(♯11).

Measure Numbers: 1, 2, 3, 4, 5, 6, 7, 8, 9, 10, 11, 12, 13, 14, 15, 16, 17, 18, 19, 20, 21, 22, 23, 24, 25, 26, 27, 28, 29, 30, 31, 32, 33, 34, 35, 36, 37, 38, 39, 40, 41, 42.

Section 37: (OPEN FOR SOLOS - BACKGROUNDS ON CUE)

Copyright © 1963 Prestige Music

Copyright Renewed

This arrangement Copyright © 2011 Prestige Music
International Copyright Secured All Rights Reserved

GUITAR

(45)

Bb13

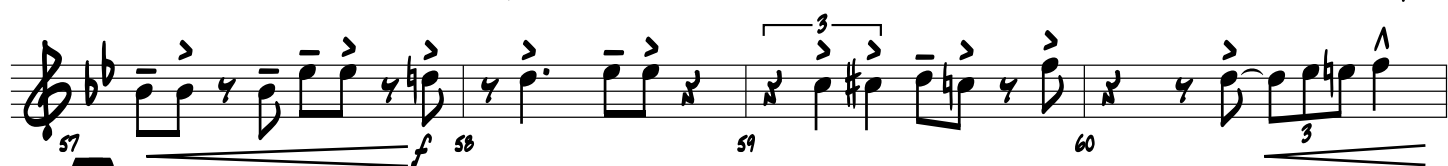
B13

Bb13

Eb13



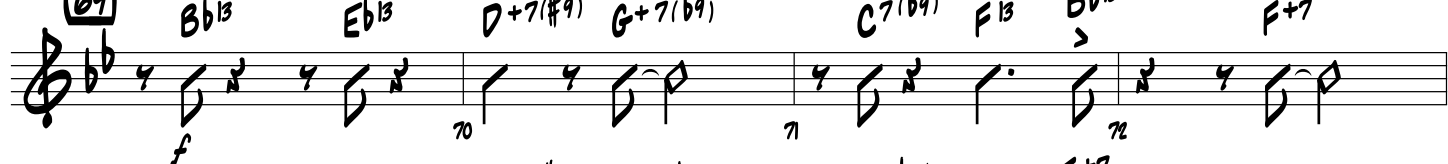
(53) (ON CUE)



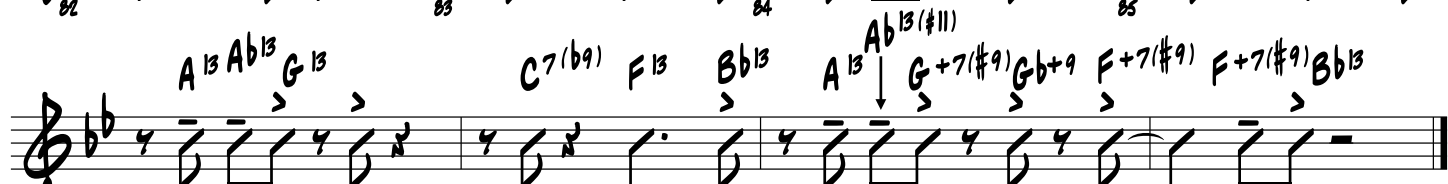
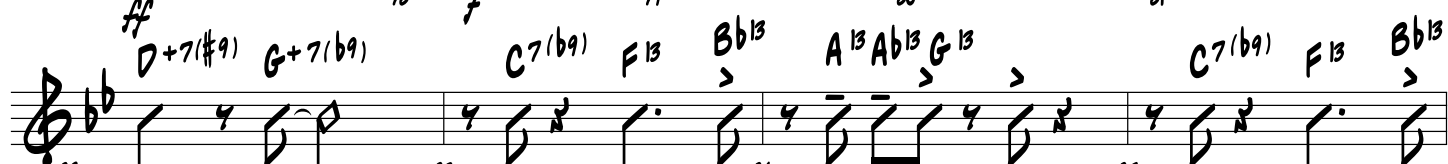
(61)



(69)



(77)



DOXY

PIANO

By **SONNY ROLLINS**
Arranged by **MARK TAYLOR**

(MEDIUM SWING) (♩ = ♩^3)

Chord symbols and measure numbers are as follows:

- System 1: Measures 1-5. Chords: Bb13, Eb13, D+7(#9), G+7(b9), C9, F+7(#9), Bb13, F+7.
- System 2: Measures 6-9. Chords: Bb13, Eb13, D+7(#9), G+7(b9), C7(b9), F13, Bb13, F+7, Bb13, Eb13.
- System 3: Measures 10-14. Chords: D+7(#9), Db9, C7(b9), F13, F+7, Bb13, B9(#11), Bb+7(#9), Bb7(#9).
- System 4: Measures 15-19. Chords: Eb13, E07, Bb13, Eb13, D+7(#9), G+7(b9), C7(b9), F13, Bb13.
- System 5: Measures 20-24. Chords: F+7, Bb13, Eb13, D+7(#9), G+7(b9), C7(b9), F13, Bb13, F+7.

Copyright © 1963 Prestige Music

Copyright Renewed

This arrangement Copyright © 2011 Prestige Music
International Copyright Secured All Rights Reserved

PIANO

Handwritten musical notation for measures 25-28. Chords: Bb13, Eb13, D+7(#9), Db9, C7(b9), F7, D+7, Eb+7, F+7. Measure numbers 25, 26, 27, 28 are indicated below the staff.

Handwritten musical notation for measures 29-32. Chords: Bb13, B9(#11), Bb+7(#9), Bb7(#9), Eb13, E07. Measure numbers 29, 30, 31, 32 are indicated below the staff.

Handwritten musical notation for measures 33-36. Chords: Bb13, Eb13, D+7(#9), G+7(b9), C9, F13, Bb13, F+7. Measure numbers 33, 34, 35, 36 are indicated below the staff.

(OPEN FOR SOLOS - BACKGROUNDS ON CUE)

Handwritten musical notation for measures 37-41. Chords: Bb13, A+7(b9), Ab13, G+7(b9), C7(b9), F13, Bb13, F+7, Bb13, Eb13. Measure numbers 37, 38, 39, 40, 41 are indicated below the staff.

Handwritten musical notation for measures 42-47. Chords: D+7(#9), Db13(#11), C7(b9), F+7, Bb13, B13, Bb13, Eb13. Measure numbers 42, 43, 44, 45, 46, 47 are indicated below the staff.

Handwritten musical notation for measures 48-52. Chords: E07, Bb13, Eb13, D+7(#9), G+7(b9), C+7(b9), F+7(#9), Bb13, F+7. Measure numbers 48, 49, 50, 51, 52 are indicated below the staff.

PIANO

53 (ON CUE) **61** **7**

69 **Bb13** **Eb13** **D+7(#9)** **G+7(b9)** **C7(b9)** **F13** **Bb13** **F+7**

73 **Bb13** **Eb13** **D+7(#9)** **G+7(b9)** **C7(b9)** **F+7** **D+7** **Eb+7** **F+7**

77 **Bb13** **B9(#11)** **Bb+7(#9)** **Bb7(#9)** **Eb13** **E07** **Bb13** **Eb13**

82 **A13** **Ab13** **G13** **C7(b9)** **F13** **Bb13** **A13** **Ab13** **G13** **C7(b9)** **F13** **Bb13**

86 **A13** **Ab13** **G13** **C7(b9)** **F13** **Bb13** **A13** **Ab13** **G+7(#9)** **Gb+9** **F+7(#9)** **Bb13**

DOXY

SAMPLE SOLOS

By **SONNY ROLLINS**
Arranged by **MARK TAYLOR**

C TREBLE CLEF INSTRUMENTS

(37) (OPEN FOR SOLOS - BACKGROUNDS ON CUE)

Handwritten musical notation for C Treble Clef Instruments, measures 37-52. The key signature is B-flat major (two flats). The notation includes various chords and melodic lines with fingerings and accents.

Measures 37-40: Bb^{13} , $A+7(b9)$, Ab^{13} , $G+7(b9)$, $C7(b9)$, F^{13} , Bb^{13} , $F+7$

Measures 41-44: Bb^{13} , Eb^{13} , $D+7(\#9)$, $Db^{13}(\#11)$, $C7(b9)$, $F+7$

Measures 45-48: Bb^{13} , B^{13} , Bb^{13} , Eb^{13} , $E07$

Measures 49-52: Bb^{13} , Eb^{13} , $D+7(\#9)$, $G+7(b9)$, $C+7(b9)$, $F+7(\#9)$, Bb^{13} , $F+7$

Bb INSTRUMENTS

(37) (OPEN FOR SOLOS - BACKGROUNDS ON CUE)

Handwritten musical notation for Bb Instruments, measures 37-52. The key signature is B-flat major (two flats). The notation includes various chords and melodic lines with fingerings and accents.

Measures 37-40: C^{13} , $B+7(b9)$, Bb^{13} , $A+7(b9)$, $D7(b9)$, G^{13} , C^{13} , $G+7$

Measures 41-44: C^{13} , F^{13} , $E+7(\#9)$, $Eb^{13}(\#11)$, $D7(b9)$, $G+7$

Measures 45-48: C^{13} , $C\#^{13}$, C^{13} , F^{13} , $F\#07$

Measures 49-52: C^{13} , F^{13} , $E+7(\#9)$, $A+7(b9)$, $D+7(b9)$, $G+7(\#9)$, C^{13} , $G+7$

SAMPLE SOLOS

Eb INSTRUMENTS

(37) (OPEN FOR SOLOS - BACKGROUNDS ON CUE)

Musical notation for Eb Instruments (Treble Clef) showing measures 37 through 52. The notation includes various chords and melodic lines. Chords are indicated above the staff: G¹³, F^{#+7(b9)}, F¹³, E^{+7(b9)}, A^{7(b9)}, D¹³, G¹³, D⁺⁷, G¹³, C¹³, B^{+7(#+9)}, B^{b13(#+11)}, A^{7(b9)}, D⁺⁷, G¹³, A^{b13}, G¹³, C¹³, C^{#+07}, G¹³, C¹³, B^{+7(#+9)}, E^{+7(b9)}, A^{+7(b9)}, D^{+7(#+9)}, G¹³, D⁺⁷.

BASS CLEF INSTRUMENTS

(37) (OPEN FOR SOLOS - BACKGROUNDS ON CUE)

Musical notation for Bass Clef Instruments (Bass Clef) showing measures 37 through 52. The notation includes various chords and melodic lines. Chords are indicated above the staff: B^{b13}, A^{+7(b9)}, A^{b13}, G^{+7(b9)}, C^{7(b9)}, F¹³, B^{b13}, F⁺⁷, B^{b13}, E^{b13}, D^{+7(#+9)}, D^{b13(#+11)}, C^{7(b9)}, F⁺⁷, B^{b13}, B¹³, B^{b13}, E^{b13}, E⁰⁷, B^{b13}, E^{b13}, D^{+7(#+9)}, G^{+7(b9)}, C^{+7(b9)}, F^{+7(#+9)}, B^{b13}, F⁺⁷.

HAL LEONARD LITTLE BIG BAND

07011840

DOXY

By **SONNY ROLLINS**

Arranged by MARK TAYLOR

INSTRUMENTATION

| | |
|--------------|----------------------------|
| Alto Sax | Solo Sheet |
| Tenor Sax | C Treble Clef Instruments |
| Baritone Sax | B \flat Instruments |
| Trumpet 1 | E \flat Instruments |
| Trumpet 2 | Bass Clef Instruments |
| Trombone | Alternate Alto Sax |
| Guitar | (substitute for Tpt.2) |
| Piano | Alternate Tenor Sax |
| Bass | (substitute for Tbn.) |
| Drums | Alternate Trombone |
| | (substitute for Bari. Sax) |
| | Sample Solos (4) |

ADDITIONAL PARTS U.S. \$2.50

SCORE (07011840) U.S. \$5.00

DOXY

By **SONNY ROLLINS**
Arranged by **MARK TAYLOR**

(MEDIUM SWING ♩ = 120) (♩ = ♪)

5

ALTO SAX

TENOR SAX

BARITONE SAX (TROMBONE)

TRUMPET 1

TRUMPET 2 (ALTO SAX)

TROMBONE (TENOR SAX)

GUITAR

PIANO

BASS

DRUMS

1 2 3 4 5 6 7 8

Chord progression: Bb13, Eb13, D+7(F#9), G+7(b9), C9, F+7(F#9), Bb13, F+7, Bb13, Eb13, D+7(F#9), G+7(b9), C7(b9), F13, Bb13, F+7

Drum notation: (ENS.), (FILL), (RIDE), (G-FEEL)

13

Musical score for a jazz ensemble, measures 9 through 16. The score includes parts for Alto Sax, Tenor Sax, Baritone Sax, Trumpet 1, Trumpet 2, Trombone, Guitar, Piano, Bass, and Drums.

ALTO SAX: Rests throughout measures 9-16.

TENOR SAX: Melodic line with accents and slurs. Notes include G4, A4, B4, C5, D5, E5, F5, G5, A5, B5, C6, D6, E6, F6, G6, A6, B6, C7, D7, E7, F7, G7, A7, B7, C8, D8, E8, F8, G8, A8, B8, C9, D9, E9, F9, G9, A9, B9, C10, D10, E10, F10, G10, A10, B10, C11, D11, E11, F11, G11, A11, B11, C12, D12, E12, F12, G12, A12, B12, C13, D13, E13, F13, G13, A13, B13, C14, D14, E14, F14, G14, A14, B14, C15, D15, E15, F15, G15, A15, B15, C16, D16, E16, F16, G16, A16, B16, C17, D17, E17, F17, G17, A17, B17, C18, D18, E18, F18, G18, A18, B18, C19, D19, E19, F19, G19, A19, B19, C20, D20, E20, F20, G20, A20, B20, C21, D21, E21, F21, G21, A21, B21, C22, D22, E22, F22, G22, A22, B22, C23, D23, E23, F23, G23, A23, B23, C24, D24, E24, F24, G24, A24, B24, C25, D25, E25, F25, G25, A25, B25, C26, D26, E26, F26, G26, A26, B26, C27, D27, E27, F27, G27, A27, B27, C28, D28, E28, F28, G28, A28, B28, C29, D29, E29, F29, G29, A29, B29, C30, D30, E30, F30, G30, A30, B30, C31, D31, E31, F31, G31, A31, B31, C32, D32, E32, F32, G32, A32, B32, C33, D33, E33, F33, G33, A33, B33, C34, D34, E34, F34, G34, A34, B34, C35, D35, E35, F35, G35, A35, B35, C36, D36, E36, F36, G36, A36, B36, C37, D37, E37, F37, G37, A37, B37, C38, D38, E38, F38, G38, A38, B38, C39, D39, E39, F39, G39, A39, B39, C40, D40, E40, F40, G40, A40, B40, C41, D41, E41, F41, G41, A41, B41, C42, D42, E42, F42, G42, A42, B42, C43, D43, E43, F43, G43, A43, B43, C44, D44, E44, F44, G44, A44, B44, C45, D45, E45, F45, G45, A45, B45, C46, D46, E46, F46, G46, A46, B46, C47, D47, E47, F47, G47, A47, B47, C48, D48, E48, F48, G48, A48, B48, C49, D49, E49, F49, G49, A49, B49, C50, D50, E50, F50, G50, A50, B50, C51, D51, E51, F51, G51, A51, B51, C52, D52, E52, F52, G52, A52, B52, C53, D53, E53, F53, G53, A53, B53, C54, D54, E54, F54, G54, A54, B54, C55, D55, E55, F55, G55, A55, B55, C56, D56, E56, F56, G56, A56, B56, C57, D57, E57, F57, G57, A57, B57, C58, D58, E58, F58, G58, A58, B58, C59, D59, E59, F59, G59, A59, B59, C60, D60, E60, F60, G60, A60, B60, C61, D61, E61, F61, G61, A61, B61, C62, D62, E62, F62, G62, A62, B62, C63, D63, E63, F63, G63, A63, B63, C64, D64, E64, F64, G64, A64, B64, C65, D65, E65, F65, G65, A65, B65, C66, D66, E66, F66, G66, A66, B66, C67, D67, E67, F67, G67, A67, B67, C68, D68, E68, F68, G68, A68, B68, C69, D69, E69, F69, G69, A69, B69, C70, D70, E70, F70, G70, A70, B70, C71, D71, E71, F71, G71, A71, B71, C72, D72, E72, F72, G72, A72, B72, C73, D73, E73, F73, G73, A73, B73, C74, D74, E74, F74, G74, A74, B74, C75, D75, E75, F75, G75, A75, B75, C76, D76, E76, F76, G76, A76, B76, C77, D77, E77, F77, G77, A77, B77, C78, D78, E78, F78, G78, A78, B78, C79, D79, E79, F79, G79, A79, B79, C80, D80, E80, F80, G80, A80, B80, C81, D81, E81, F81, G81, A81, B81, C82, D82, E82, F82, G82, A82, B82, C83, D83, E83, F83, G83, A83, B83, C84, D84, E84, F84, G84, A84, B84, C85, D85, E85, F85, G85, A85, B85, C86, D86, E86, F86, G86, A86, B86, C87, D87, E87, F87, G87, A87, B87, C88, D88, E88, F88, G88, A88, B88, C89, D89, E89, F89, G89, A89, B89, C90, D90, E90, F90, G90, A90, B90, C91, D91, E91, F91, G91, A91, B91, C92, D92, E92, F92, G92, A92, B92, C93, D93, E93, F93, G93, A93, B93, C94, D94, E94, F94, G94, A94, B94, C95, D95, E95, F95, G95, A95, B95, C96, D96, E96, F96, G96, A96, B96, C97, D97, E97, F97, G97, A97, B97, C98, D98, E98, F98, G98, A98, B98, C99, D99, E99, F99, G99, A99, B99, C100, D100, E100, F100, G100, A100, B100, C101, D101, E101, F101, G101, A101, B101, C102, D102, E102, F102, G102, A102, B102, C103, D103, E103, F103, G103, A103, B103, C104, D104, E104, F104, G104, A104, B104, C105, D105, E105, F105, G105, A105, B105, C106, D106, E106, F106, G106, A106, B106, C107, D107, E107, F107, G107, A107, B107, C108, D108, E108, F108, G108, A108, B108, C109, D109, E109, F109, G109, A109, B109, C110, D110, E110, F110, G110, A110, B110, C111, D111, E111, F111, G111, A111, B111, C112, D112, E112, F112, G112, A112, B112, C113, D113, E113, F113, G113, A113, B113, C114, D114, E114, F114, G114, A114, B114, C115, D115, E115, F115, G115, A115, B115, C116, D116, E116, F116, G116, A116, B116, C117, D117, E117, F117, G117, A117, B117, C118, D118, E118, F118, G118, A118, B118, C119, D119, E119, F119, G119, A119, B119, C120, D120, E120, F120, G120, A120, B120, C121, D121, E121, F121, G121, A121, B121, C122, D122, E122, F122, G122, A122, B122, C123, D123, E123, F123, G123, A123, B123, C124, D124, E124, F124, G124, A124, B124, C125, D125, E125, F125, G125, A125, B125, C126, D126, E126, F126, G126, A126, B126, C127, D127, E127, F127, G127, A127, B127, C128, D128, E128, F128, G128, A128, B128, C129, D129, E129, F129, G129, A129, B129, C130, D130, E130, F130, G130, A130, B130, C131, D131, E131, F131, G131, A131, B131, C132, D132, E132, F132, G132, A132, B132, C133, D133, E133, F133, G133, A133, B133, C134, D134, E134, F134, G134, A134, B134, C135, D135, E135, F135, G135, A135, B135, C136, D136, E136, F136, G136, A136, B136, C137, D137, E137, F137, G137, A137, B137, C138, D138, E138, F138, G138, A138, B138, C139, D139, E139, F139, G139, A139, B139, C140, D140, E140, F140, G140, A140, B140, C141, D141, E141, F141, G141, A141, B141, C142, D142, E142, F142, G142, A142, B142, C143, D143, E143, F143, G143, A143, B143, C144, D144, E144, F144, G144, A144, B144, C145, D145, E145, F145, G145, A145, B145, C146, D146, E146, F146, G146, A146, B146, C147, D147, E147, F147, G147, A147, B147, C148, D148, E148, F148, G148, A148, B148, C149, D149, E149, F149, G149, A149, B149, C150, D150, E150, F150, G150, A150, B150, C151, D151, E151, F151, G151, A151, B151, C152, D152, E152, F152, G152, A152, B152, C153, D153, E153, F153, G153, A153, B153, C154, D154, E154, F154, G154, A154, B154, C155, D155, E155, F155, G155, A155, B155, C156, D156, E156, F156, G156, A156, B156, C157, D157, E157, F157, G157, A157, B157, C158, D158, E158, F158, G158, A158, B158, C159, D159, E159, F159, G159, A159, B159, C160, D160, E160, F160, G160, A160, B160, C161, D161, E161, F161, G161, A161, B161, C162, D162, E162, F162, G162, A162, B162, C163, D163, E163, F163, G163, A163, B163, C164, D164, E164, F164, G164, A164, B164, C165, D165, E165, F165, G165, A165, B165, C166, D166, E166, F166, G166, A166, B166, C167, D167, E167, F167, G167, A167, B167, C168, D168, E168, F168, G168, A168, B168, C169, D169, E169, F169, G169, A169, B169, C170, D170, E170, F170, G170, A170, B170, C171, D171, E171, F171, G171, A171, B171, C172, D172, E172, F172, G172, A172, B172, C173, D173, E173, F173, G173, A173, B173, C174, D174, E174, F174, G174, A174, B174, C175, D175, E175, F175, G175, A175, B175, C176, D176, E176, F176, G176, A176, B176, C177, D177, E177, F177, G177, A177, B177, C178, D178, E178, F178, G178, A178, B178, C179, D179, E179, F179, G179, A179, B179, C180, D180, E180, F180, G180, A180, B180, C181, D181, E181, F181, G181, A181, B181, C182, D182, E182, F182, G182, A182, B182, C183, D183, E183, F183, G183, A183, B183, C184, D184, E184, F184, G184, A184, B184, C185, D185, E185, F185, G185, A185, B185, C186, D186, E186, F186, G186, A186, B186, C187, D187, E187, F187, G187, A187, B187, C188, D188, E188, F188, G188, A188, B188, C189, D189, E189, F189, G189, A189, B189, C190, D190, E190, F190, G190, A190, B190, C191, D191, E191, F191, G191, A191, B191, C192, D192, E192, F192, G192, A192, B192, C193, D193, E193, F193, G193, A193, B193, C194, D194, E194, F194, G194, A194, B194, C195, D195, E195, F195, G195, A195, B195, C196, D196, E196, F196, G196, A196, B196, C197, D197, E197, F197, G197, A197, B197, C198, D198, E198, F198, G198, A198, B198, C199, D199, E199, F199, G199, A199, B199, C200, D200, E200, F200, G200, A200, B200, C201, D201, E201, F201, G201, A201, B201, C202, D202, E202, F202, G202, A202, B202, C203, D203, E203, F203, G203, A203, B203, C204, D204, E204, F204, G204, A204, B204, C205, D205, E205, F205, G205, A205, B205, C206, D206, E206, F206, G206, A206, B206, C207, D207, E207, F207, G207, A207, B207, C208, D208, E208, F208, G208, A208, B208, C209, D209, E209, F209, G209, A209, B209, C210, D210, E210, F210, G210, A210, B210, C211, D211, E211, F211, G211, A211, B211, C212, D212, E212, F212, G212, A212, B212, C213, D213, E213, F213, G213, A213, B213, C214, D214, E214, F214, G214, A214, B214, C215, D215, E215, F215, G215, A215, B215, C216, D216, E216, F216, G216, A216, B216, C217, D217, E217, F217, G217, A217, B217, C218, D218, E218, F218, G218, A218, B218, C219, D219, E219, F219, G219, A219, B219, C220, D220, E220, F220, G220, A220, B220, C221, D221, E221, F221, G221, A221, B221, C222, D222, E222, F222, G222, A222, B222, C223, D223, E223, F223, G223, A223, B223, C224, D224, E224, F224, G224, A224, B224, C225, D225, E225, F225, G225, A225, B225, C226, D226, E226, F226, G226, A226, B226, C227, D227, E227, F227, G227, A227, B227, C228, D228, E228, F228, G228, A228, B228, C229, D229, E229, F229, G229, A229, B229, C230, D230, E230, F230, G230, A230, B230, C231, D231, E231, F231, G231, A231, B231, C232, D232, E232, F232, G232, A232, B232, C233, D233, E233, F233, G233, A233, B233, C234, D234, E234, F234, G234, A234, B234, C235, D235, E235, F235, G235, A235, B235, C236, D236, E236, F236, G236, A236, B236, C237, D237, E237, F237, G237, A237, B237, C238, D238, E238, F238, G238, A238, B238, C239, D239, E239, F239, G239, A239, B239, C240, D240, E240, F240, G240, A240, B240, C241, D241, E241, F241, G241, A241, B241, C242, D242, E242, F242, G242, A242, B242, C243, D243, E243, F243, G243, A243, B243, C244, D244, E244, F244, G244, A244, B244, C245, D245, E245, F245, G245, A245, B245, C246, D246, E246, F246, G246, A246, B246, C247, D247, E247, F247, G247, A247, B247, C248, D248, E248, F248, G248, A248, B248, C249, D249, E249, F249, G249, A249, B249, C250, D250, E250, F250, G250, A250, B250, C251, D251, E251, F251, G251, A251, B251, C252, D252, E252, F252, G252, A252, B252, C253, D253, E253, F253, G253, A253, B253, C254, D254, E254, F254, G254, A254, B254, C255, D255, E255, F255, G255, A255, B255, C256, D256, E256, F256, G256, A256, B256, C257, D257, E257, F257, G257, A257, B257, C258, D258, E258, F258, G258, A258, B258, C259, D259, E259, F259, G259, A259, B259, C260, D260, E260, F260, G260, A260, B260, C261, D261, E261, F261, G261, A261, B261, C262, D262, E262, F262, G262, A262, B262, C263, D263, E263, F263, G263, A263, B263, C264, D264, E264, F264, G264, A264, B264, C265, D265, E265, F265, G265, A265, B265, C266, D266, E266, F266, G266, A266, B266, C267, D267, E267, F267, G267, A267, B267, C268, D268, E268, F268, G268, A268, B268, C269, D269, E269, F269, G269, A269, B269, C270, D270, E270, F270, G270, A270, B270, C271, D271, E271, F271, G271, A271, B271, C272, D272, E272, F272, G272, A272, B272, C273, D273, E273, F273, G273, A273, B273, C274, D274, E274, F274, G274, A274, B274, C275, D275, E275, F275, G275, A275, B275, C276, D276, E276, F276, G276, A276, B276, C277, D277, E277, F277, G277, A277, B277, C278, D278, E278, F278, G278, A278, B278, C279, D279, E279, F279, G279, A279, B279, C280, D280, E280, F280, G280, A280, B280, C281, D281, E281, F281, G281, A281, B281, C282, D282, E282, F282, G282, A282, B282, C283, D283, E283, F283, G283, A283, B283, C284, D284, E284, F284, G284, A284, B284, C285, D285, E285, F285, G285, A285, B285, C286, D286, E286, F286, G286, A286, B286, C287, D287, E287, F287, G287, A287, B287, C288, D288, E288, F288, G288, A288, B288, C289, D289, E289, F289, G289, A289, B289, C290, D290, E290, F290, G290, A290, B290, C291, D291, E291, F291, G291, A291, B291, C292, D292, E292, F292, G292, A292, B292, C293, D293, E293, F293, G293, A293, B293, C294, D294, E294, F294, G294, A294, B294, C295, D295, E295, F295, G295, A295, B295, C296, D296, E296, F296, G296, A296, B296, C297, D297, E297, F297, G297, A297, B297, C298, D298, E298, F298, G298, A298, B298, C299, D299, E299, F299, G299, A299, B299, C300, D300, E300, F300, G300, A300, B300, C301, D301, E301, F301, G301, A301, B301, C302, D302, E302, F302, G302, A302, B302, C303, D303, E303, F303, G303, A303, B303, C304, D304, E304, F304, G304, A304, B304, C305, D305, E305, F305, G305, A305, B305, C306, D306, E306, F306, G306, A306, B306, C307, D307, E307, F307, G307, A307, B307, C308, D308, E308, F308, G308, A308, B308, C309, D309, E309, F309, G309, A309, B309, C310, D310, E310, F310, G310, A310, B310, C311, D311, E311, F311, G311, A311, B311, C312, D312, E312, F312, G312, A312, B312, C313, D313, E313, F313, G313, A313, B313, C314, D314, E314, F314, G314, A314, B314, C315, D315, E315, F315, G315, A315, B315, C316, D316, E316, F316, G316, A316, B316, C317, D317, E317, F317, G317, A317, B317, C318, D318, E318, F318, G318, A318, B318, C319, D319, E319, F319, G319, A319, B319, C320, D320, E320, F320, G320, A320, B320, C321, D321, E321, F321, G321, A321, B321, C322, D322, E322, F322, G322, A322, B322, C323, D323, E323, F323, G323, A323, B323, C324, D324, E324, F324, G324, A324, B324, C325, D325, E325, F325, G325, A325, B325, C326, D326, E326, F326, G326, A326, B326, C327, D327, E327, F327, G327, A327, B327, C328, D328, E328, F328, G328, A328, B328, C329, D329, E329, F329, G329, A329, B329, C330, D330, E330, F330, G330, A330, B330, C331, D331, E331, F331, G331, A331, B331, C332, D332, E332, F332, G332, A332, B332, C333, D333, E333, F333, G333, A333, B333, C334, D334, E334, F334, G334, A334, B334, C335, D335, E335, F335, G335, A335, B335, C336, D336, E336, F336, G336, A336, B336, C337, D337, E337, F337, G337, A337, B337, C338, D338, E338, F338, G338, A338, B338, C339, D339, E339, F339, G339, A339, B339, C340, D340, E340, F340, G340, A340, B340, C341, D341, E341, F341, G341, A341, B341, C342, D342, E342, F342, G342, A342, B342, C343, D343, E343, F343, G343, A343, B343, C344, D344, E344, F344, G344, A344, B344, C345, D345, E345, F345, G345, A345, B345, C346, D346, E346, F346, G346, A346, B346, C347, D347, E347, F347, G347, A347, B347, C348, D348, E348, F348, G348, A348, B348, C349, D349, E349, F349, G349, A349, B349, C350, D350, E350, F350, G350, A350, B350, C351, D351, E351, F351, G351, A351, B351, C352, D352, E352, F352, G352, A352, B352, C353, D353, E353, F353, G353, A353, B353, C354, D354, E354, F354, G354, A354, B354, C355, D355, E355, F355, G355, A355, B355, C356, D356, E356, F356, G356, A356, B356, C357, D357, E357, F357, G357, A357, B357, C358, D358, E358, F358, G358, A358, B358, C359, D359, E359, F359, G359, A359, B359, C360, D360, E360, F360, G360, A360, B360, C361, D361, E361, F361, G361, A361, B361, C362, D362, E362, F362, G362, A362, B362, C363, D363, E363, F363, G363, A363, B363, C364, D364, E364, F364, G364, A364, B364, C365, D365, E365, F365, G365, A365, B365, C366, D366, E366, F366, G366, A366, B366, C367, D367, E367, F367, G367, A367, B367, C368, D368, E368, F368, G368, A368, B368, C369, D369, E369, F369, G369, A369, B369, C370, D370, E370, F370, G370, A370, B370, C371, D371, E371, F371, G371, A371, B371, C372, D372, E372, F372,

ALTO SAX

TENOR SAX

BARITONE SAX

TRUMPET 1

TRUMPET 2

TROMBONE

GUITAR

PIANO

BASS

DRUMS

21

17 18 19 20 21 22 23 24

07011840
Doxy - 4

29

ALTO SAX

TENOR SAX

BARITONE SAX

TRUMPET 1

TRUMPET 2

TROMBONE

GUITAR

PIANO

BASS

DRUMS

25 26 27 28 29 30 31 32

07011840
Doxy - 5

37 (OPEN FOR SOLOS) SAMPLE SOLOS INCLUDED AS SEPARATE PART
(PLAY 1ST TIME ONLY) (BKDPS. ON CUE)

ALTO SAX

TENOR SAX

BARITONE SAX

TRUMPET 1

TRUMPET 2

TROMBONE

GUITAR

PIANO

BASS

DRUMS

33 34 35 36 37 38 39 40

07011840
Doxy - 6

Chord symbols for Guitar and Piano:

- 33: Bb, Eb, D+7(F#), G+7(b9), C, F, Bb, F+7
- 34: Bb, Eb, D+7(F#), G+7(b9), C, F, Bb, F+7
- 35: Bb, A+7(b9), Ab, G+7(b9), C7(b9), F, Bb, F+7
- 36: Bb, A+7(b9), Ab, G+7(b9), C7(b9), F, Bb, F+7
- 37: Bb, A+7(b9), Ab, G+7(b9), C7(b9), F, Bb, F+7
- 38: Bb, A+7(b9), Ab, G+7(b9), C7(b9), F, Bb, F+7
- 39: Bb, A+7(b9), Ab, G+7(b9), C7(b9), F, Bb, F+7
- 40: Bb, A+7(b9), Ab, G+7(b9), C7(b9), F, Bb, F+7

45

ALTO SAX

TENOR SAX

BARITONE SAX

TRUMPET 1

TRUMPET 2

TROMBONE

GUITAR

PIANO

BASS

DRUMS

41 42 43 44 45 46 47 48

07011840
Draw - 8

ALTO SAX

TENOR SAX

BARITONE SAX

TRUMPET 1

TRUMPET 2

TROMBONE

GUITAR

PIANO

BASS

DRUMS

57 *f* 58 59 60 *ff* 61 *f* 62 63 64 (FILL)-----

69

ALTO SAX

TENOR SAX

BARITONE SAX

TRUMPET 1

TRUMPET 2

TROMBONE

GUITAR

PIANO

BASS

DRUMS

65 66 67 68 69 70 71 72

(F-PEEL)

ALTO SAX

TENOR SAX

BARITONE SAX

TRUMPET 1

TRUMPET 2

TROMBONE

CHORDS

PIANO

BASS

DRUMS

73 74 75 76 77 78 79 80 81

07011840
Doxy - 11

Musical score for Alto Sax, Tenor Sax, Baritone Sax, Trumpet 1, Trumpet 2, Trombone, Guitar, Piano, Bass, and Drums. The score is written in 4/4 time and includes various musical notations, including notes, rests, and dynamic markings.

The score is divided into measures, with measure numbers 82 through 89 indicated at the bottom. The key signature is one flat (Bb).

Instrument parts include:

- ALTO SAX
- TENOR SAX
- BARITONE SAX
- TRUMPET 1
- TRUMPET 2
- TROMBONE
- GUITAR
- PIANO
- BASS
- DRUMS

Chord progressions are indicated above the guitar and piano parts, including: D+7(F#9), G+7(b9), C7(b9), F#9, Bb9, A#9, Ab9, G#9, C7(b9), F#9, Bb9, A#9, Ab9, G#9, C7(b9), F#9, Bb9, A#9, Ab9, G#9, F+7(F#9), and Bb9.

Dynamic markings include *f* (forte) and *ff* (fortissimo).

Drum notation includes a "CENS." (Cymbal) marking and a "H.H." (Hi-Hat) marking.

DOXY

TENOR SAX

By **SONNY ROLLINS**
Arranged by **MARK TAYLOR**

(MEDIUM SWING) (♩ = ♩^3)

5

13

21

29

(OPEN FOR SOLOS)
(PLAY 1ST TIME ONLY) **(BKGD'S. ON CUE)**

37

Copyright © 1963 Prestige Music

Copyright Renewed

This arrangement Copyright © 2011 Prestige Music
International Copyright Secured All Rights Reserved

TENOR SAX

(45)

42 43 44 *f* 46 (PLAY LAST TIME ONLY)

47 48 49 *mf* 50 51 *f* 52 *ff*

(53) (ON CUE)

54 55 56 57 58 59 60 61

62 63 64 *ff* *f*

65 66 67 68 69 *ff* *f*

70 71 72

73 74 75 76

(77)

78 79 80 81 *ff* *f*

82 83 84 85

86 87 88 89 *ff*

DOXY

TROMBONEBy **SONNY ROLLINS**
Arranged by **MARK TAYLOR****(MEDIUM SWING)** (♩ = ♩^3)

5

13

21

29

37 (OPEN FOR SOLOS) (PLAY 1ST TIME ONLY)

38 (BKGD'S. ON CUE)

41

Copyright © 1963 Prestige Music

Copyright Renewed

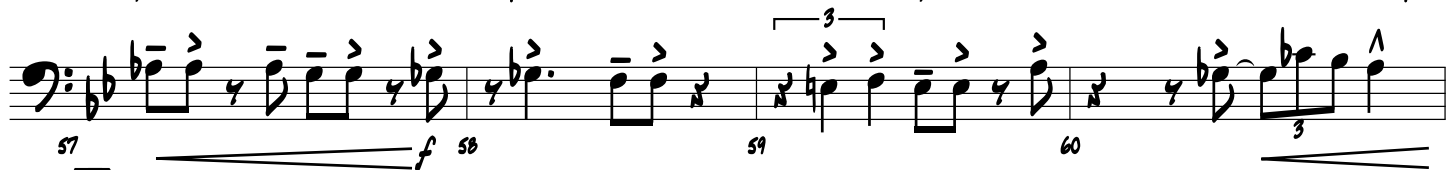
This arrangement Copyright © 2011 Prestige Music
International Copyright Secured All Rights Reserved

TROMBONE

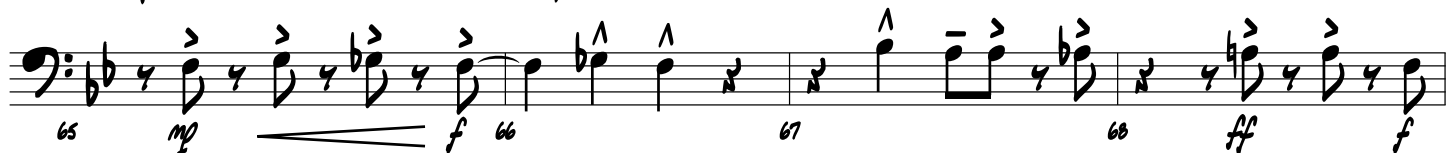
(45)



(53) (ON CUE)



(61)



(69)



(77)

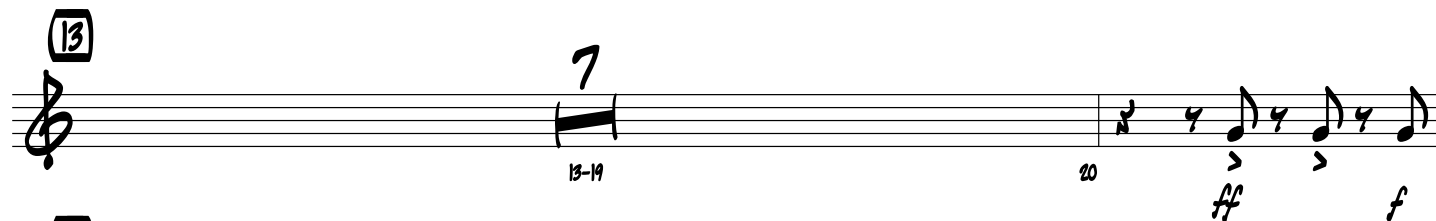


DOXY

TRUMPET I

By **SONNY ROLLINS**
Arranged by **MARK TAYLOR**

(MEDIUM SWING) (♩ = $\frac{3}{4}$ ♩)

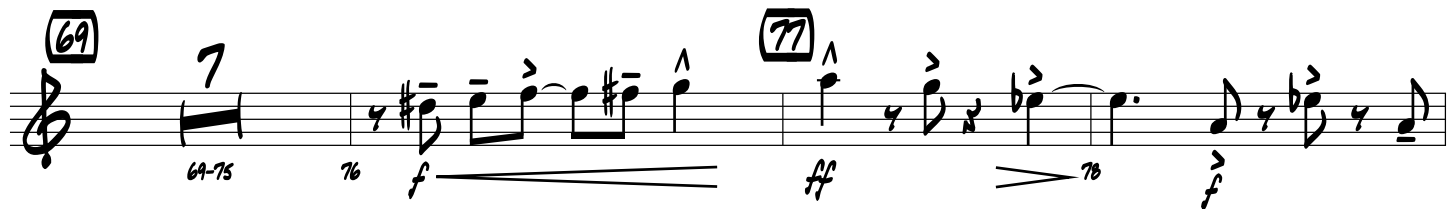
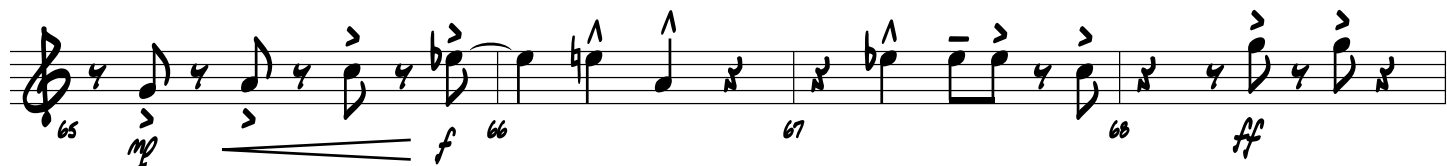
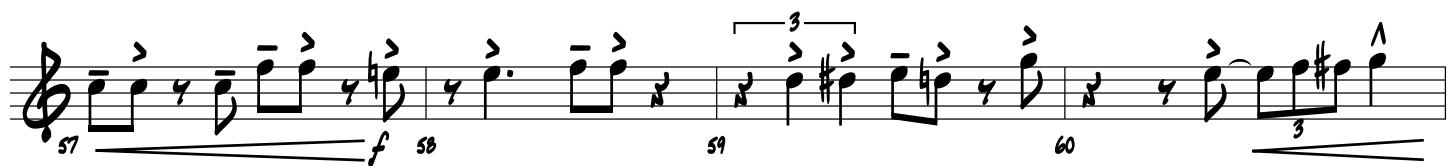


37 (OPEN FOR SOLOS)
(PLAY 1ST TIME ONLY)

(BKGD'S. ON CUE)



TRUMPET I

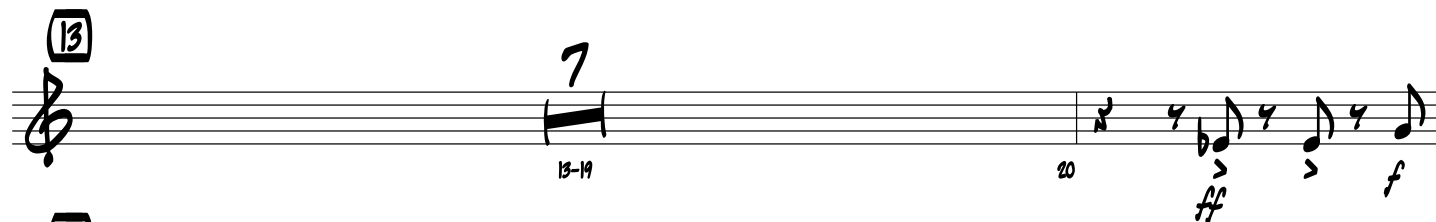
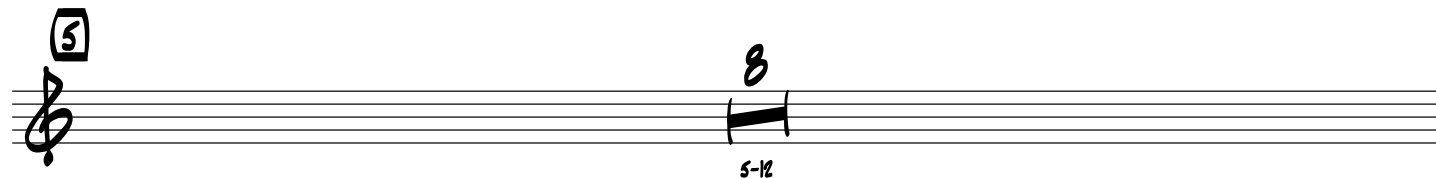


DOXY

TRUMPET 2

By **SONNY ROLLINS**
Arranged by **MARK TAYLOR**

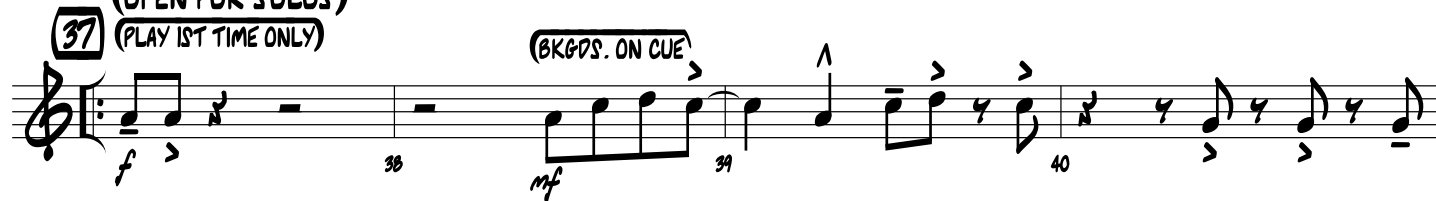
(MEDIUM SWING) (♩ = $\frac{3}{4}$)



(OPEN FOR SOLOS)

(PLAY 1ST TIME ONLY)

(BKGDS. ON CUE)



TRUMPET 2

41 42 43 44

45

46 47 48

(PLAY LAST TIME ONLY)

49 50 51 52

53 (ON CUE)

54 55 56

57 58 59 60

61

62 63 64

65 66 67 68

69

69-75 76

77

78 79 80-85

86 87 88 89